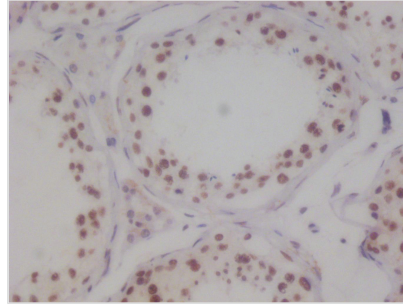


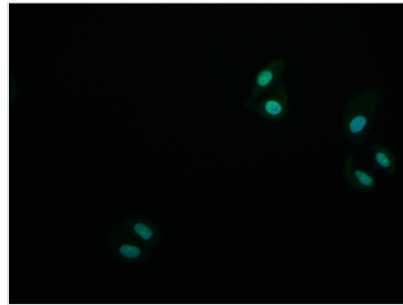


KAT8 Recombinant Monoclonal Antibody

Product Code	CSB-RA694283A0HU
Storage	Upon receipt, store at -20°C or -80°C. Avoid repeated freeze.
Uniprot No.	Q9H7Z6
Immunogen	A synthesized peptide derived from human KAT8
Species Reactivity	Human
Tested Applications	ELISA, IHC, IF; Recommended dilution: IHC:1:50-1:200, IF:1:50-1:200
Relevance	Histone acetyltransferase which may be involved in transcriptional activation (PubMed:12397079, PubMed:22020126). May influence the function of ATM (PubMed:15923642). As part of the MSL complex it is involved in acetylation of nucleosomal histone H4 producing specifically H4K16ac (PubMed:16227571, PubMed:16543150, PubMed:21217699, PubMed:22547026, PubMed:22020126). As part of the NSL complex it may be involved in acetylation of nucleosomal histone H4 on several lysine residues (PubMed:20018852, PubMed:22547026). That activity is less specific than the one of the MSL complex (PubMed:20018852, PubMed:22547026). Can also acetylate TP53/p53 at 'Lys-120'. {ECO:0000269 PubMed:12397079, ECO:0000269 PubMed:15923642, ECO:0000269 PubMed:16227571, ECO:0000269 PubMed:16543150, ECO:0000269 PubMed:20018852, ECO:0000269 PubMed:21217699, ECO:0000269 PubMed:22020126, ECO:0000269 PubMed:22547026, ECO:0000269 PubMed:31794431}.
Form	Liquid
Conjugate	Non-conjugated
Storage Buffer	Rabbit IgG in 10mM phosphate buffered saline , pH 7.4, 150mM sodium chloride, 0.05% BSA, 0.02% sodium azide and 50% glycerol.
Purification Method	Affinity-chromatography
Isotype	Rabbit IgG
Clonality	Monoclonal
Product Type	Recombinant Antibody
Immunogen Species	Homo sapiens (Human)
Research Area	Epigenetics and Nuclear Signaling
Target Names	KAT8
Clone No.	7E11
Image	



IHC image of CSB-RA694283A0HU diluted at 1:100 and staining in paraffin-embedded human testis tissue performed on a Leica Bond™ system. After dewaxing and hydration, antigen retrieval was mediated by high pressure in a citrate buffer (pH 6.0). Section was blocked with 10% normal goat serum 30min at RT. Then primary antibody (1% BSA) was incubated at 4°C overnight. The primary is detected by a Goat anti-rabbit polymer IgG labeled by HRP and visualized using 0.05% DAB.



Immunofluorescence staining of HepG2 cell with CSB-RA694283A0HU at 1:50, counter-stained with DAPI. The cells were fixed in 4% formaldehyde and blocked in 10% normal Goat Serum. The cells were then incubated with the antibody overnight at 4°C. The secondary antibody was Alexa Fluor 587-conjugated AffiniPure Goat Anti-Rabbit IgG(H+L).

Usage

For Research Use Only. Not for use in diagnostic or therapeutic procedures.