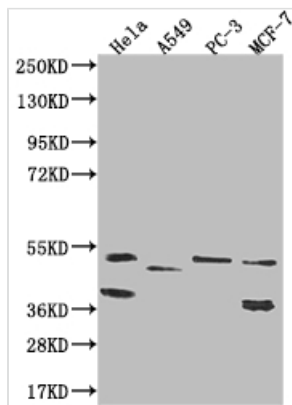




PLEKHA1 Recombinant Monoclonal Antibody

Product Code	CSB-RA918477A0HU
Storage	Upon receipt, store at -20°C or -80°C. Avoid repeated freeze.
Uniprot No.	Q9HB21
Immunogen	A synthesized peptide derived from human PLEKHA1
Species Reactivity	Human
Tested Applications	ELISA, WB; Recommended dilution: WB:1:500-1:2000
Relevance	Binds specifically to phosphatidylinositol 3,4-diphosphate (PtdIns3,4P2), but not to other phosphoinositides. May recruit other proteins to the plasma membrane. {ECO:0000269 PubMed:11001876, ECO:0000269 PubMed:11513726, ECO:0000269 PubMed:14516276}.
Form	Liquid
Conjugate	Non-conjugated
Storage Buffer	Rabbit IgG in 10mM phosphate buffered saline , pH 7.4, 150mM sodium chloride, 0.05% BSA, 0.02% sodium azide and 50% glycerol.
Purification Method	Affinity-chromatography
Isotype	Rabbit IgG
Clonality	Monoclonal
Product Type	Recombinant Antibody
Immunogen Species	Homo sapiens (Human)
Research Area	Signal transduction
Target Names	PLEKHA1
Clone No.	16C9

Image



Western Blot

Positive WB detected in: HeLa whole cell lysate, A549 whole cell lysate, PC-3 whole cell lysate, MCF-7 whole cell lysate

All lanes: PLEKHA1 antibody at 1:1000

Secondary

Goat polyclonal to rabbit IgG at 1/50000 dilution

Predicted band size: 46, 39 kDa

Observed band size: 36-55 kDa

Usage

For Research Use Only. Not for use in diagnostic or therapeutic procedures.