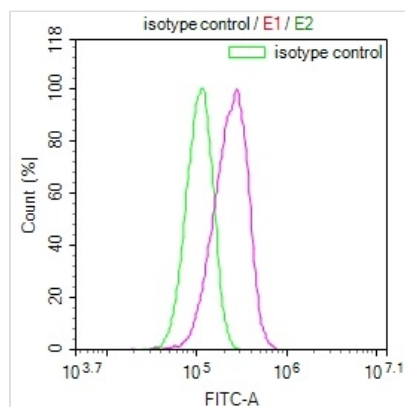




GALT Recombinant Monoclonal Antibody

Product Code	CSB-RA993143A0HU
Storage	Upon receipt, store at -20°C or -80°C. Avoid repeated freeze.
Uniprot No.	P07902
Immunogen	A synthesized peptide derived from human GALT
Species Reactivity	Human
Tested Applications	ELISA, FC; Recommended dilution: FC:1:50-1:200
Relevance	Plays an important role in galactose metabolism. {ECO:0000269 PubMed:22461411, ECO:0000269 PubMed:27005423}.
Form	Liquid
Conjugate	Non-conjugated
Storage Buffer	Rabbit IgG in 10mM phosphate buffered saline , pH 7.4, 150mM sodium chloride, 0.05% BSA, 0.02% sodium azide and 50% glycerol.
Purification Method	Affinity-chromatography
Isotype	Rabbit IgG
Clonality	Monoclonal
Product Type	Recombinant Antibody
Immunogen Species	Homo sapiens (Human)
Research Area	Cancer; Metabolism; Signal transduction
Target Names	GALT
Clone No.	19E1

Image



Overlay Peak curve showing HepG2 cells stained with CSB-RA993143A0HU (red line) at 1:100. The cells were fixed in 4% formaldehyde and permeated by 0.2% TritonX-100. Then 10% normal goat serum to block non-specific protein-protein interactions followed by the antibody (1ug/1*10⁶cells) for 45min at 4?. The secondary antibody used was FITC-conjugated Goat Anti-rabbit IgG(H+L) at 1:200 dilution for 35min at 4?. Control antibody (green line) was rabbit IgG (1ug/1*10⁶cells) used under the same conditions. Acquisition of >10,000 events was performed.

Usage

For Research Use Only. Not for use in diagnostic or therapeutic procedures.