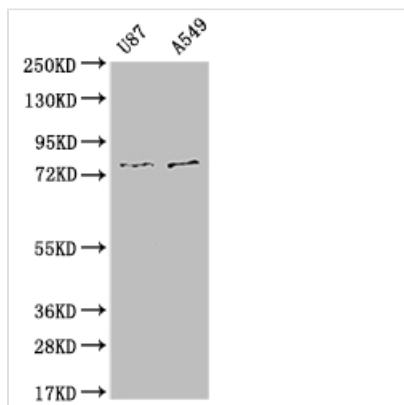




SLC25A12 Recombinant Monoclonal Antibody

Product Code	CSB-RA912385A0HU
Storage	Upon receipt, store at -20°C or -80°C. Avoid repeated freeze.
Uniprot No.	O75746
Immunogen	A synthesized peptide derived from human SLC25A12
Species Reactivity	Human
Tested Applications	ELISA, WB; Recommended dilution: WB:1:500-1:2000
Relevance	Mitochondrial and calcium-binding carrier that catalyzes the calcium-dependent exchange of cytoplasmic glutamate with mitochondrial aspartate across the mitochondrial inner membrane (PubMed:11566871, PubMed:25410934). May have a function in the urea cycle (PubMed:11566871). {ECO:0000269 PubMed:11566871, ECO:0000269 PubMed:25410934}.
Form	Liquid
Conjugate	Non-conjugated
Storage Buffer	Rabbit IgG in 10mM phosphate buffered saline , pH 7.4, 150mM sodium chloride, 0.05% BSA, 0.02% sodium azide and 50% glycerol.
Purification Method	Affinity-chromatography
Isotype	Rabbit IgG
Clonality	Monoclonal
Product Type	Recombinant Antibody
Immunogen Species	Homo sapiens (Human)
Research Area	Neuroscience; Tags & Cell Markers; Metabolism; Signal transduction
Target Names	SLC25A12
Clone No.	10B12

Image



Western Blot

Positive WB detected in: U87 whole cell lysate, A549 whole cell lysate

All lanes: SLC25A12 antibody at 1:1000

Secondary

Goat polyclonal to rabbit IgG at 1/50000 dilution

Predicted band size: 75, 63 kDa

Observed band size: 72-80 kDa

Usage

For Research Use Only. Not for use in diagnostic or therapeutic procedures.