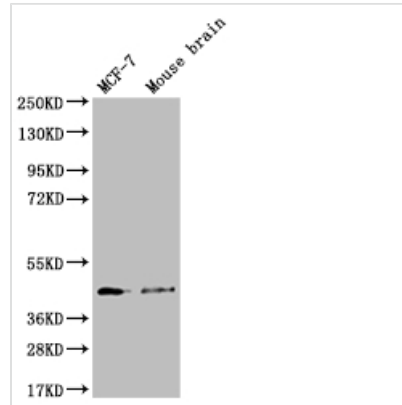




SLC27A4 Recombinant Monoclonal Antibody

Product Code	CSB-RA235828A0HU
Storage	Upon receipt, store at -20°C or -80°C. Avoid repeated freeze.
Uniprot No.	Q6P1M0
Immunogen	A synthesized peptide derived from human SLC27A4
Species Reactivity	Human, Mouse
Tested Applications	ELISA, WB; Recommended dilution: WB:1:500-1:2000
Relevance	Involved in translocation of long-chain fatty acids (LFCA) across the plasma membrane (PubMed:12556534, PubMed:21395585). Has acyl-CoA ligase activity for long-chain and very-long-chain fatty acids (VLCFAs) (PubMed:24269233). Appears to be the principal fatty acid transporter in small intestinal enterocytes. Plays a role in the formation of the epidermal barrier. Required for fat absorption in early embryogenesis (By similarity). Probably involved in fatty acid transport across the blood barrier (PubMed:21395585). Indirectly inhibits RPE65 via substrate competition and via production of VLCFA derivatives like lignoceroyl-CoA. Prevents light-induced degeneration of rods and cones (By similarity). {ECO:0000250 UniProtKB:Q91VE0, ECO:0000269 PubMed:12556534, ECO:0000269 PubMed:21395585, ECO:0000269 PubMed:24269233}.
Form	Liquid
Conjugate	Non-conjugated
Storage Buffer	Rabbit IgG in 10mM phosphate buffered saline , pH 7.4, 150mM sodium chloride, 0.05% BSA, 0.02% sodium azide and 50% glycerol.
Purification Method	Affinity-chromatography
Isotype	Rabbit IgG
Clonality	Monoclonal
Product Type	Recombinant Antibody
Immunogen Species	Homo sapiens (Human)
Research Area	Neuroscience; Cardiovascular; Metabolism; Signal transduction
Target Names	SLC27A4
Clone No.	11A1
Image	

**Western Blot**

Positive WB detected in: MCF-7 whole cell lysate, Mouse brain tissue

All lanes: SLC27A4 antibody at 1:1000

Secondary

Goat polyclonal to rabbit IgG at 1/50000 dilution

Predicted band size: 73, 27 kDa

Observed band size: 42 kDa

Usage

For Research Use Only. Not for use in diagnostic or therapeutic procedures.