

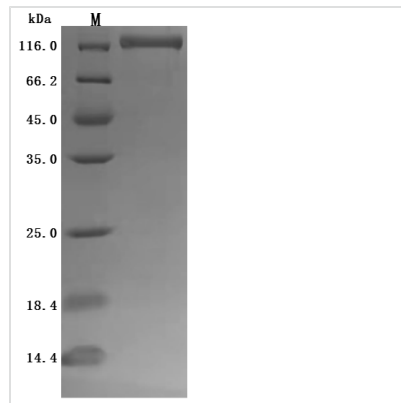


# Recombinant Human Ectonucleotide pyrophosphatase/phosphodiesterase family member 3 (ENPP3), partial (Active)

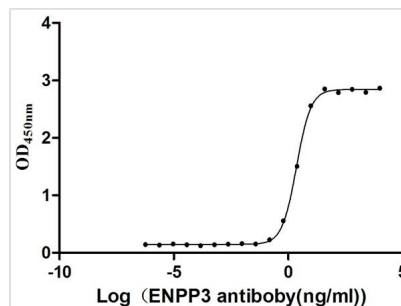
<b>Product Code</b>	CSB-MP007681HU
<b>Abbreviation</b>	Recombinant Human ENPP3 protein, partial (Active)
<b>Storage</b>	The shelf life is related to many factors, storage state, buffer ingredients, storage temperature and the stability of the protein itself. Generally, the shelf life of liquid form is 6 months at -20°C/-80°C. The shelf life of lyophilized form is 12 months at -20°C/-80°C.
<b>Uniprot No.</b>	O14638
<b>Form</b>	Lyophilized powder
<b>Storage Buffer</b>	Lyophilized from a 0.2 µm filtered 20 mM Tris-HCl, 0.5 M NaCl, 6% Trehalose, pH 8.0
<b>Product Type</b>	Recombinant Protein
<b>Immunogen Species</b>	Homo sapiens (Human)
<b>Biological Activity</b>	Measured by its binding ability in a functional ELISA. Immobilized Human ENPP3 at 2 µg/mL can bind anti-ENPP3 recombinant antibody (CSB-RA007681MA1HU), the EC <sub>50</sub> is 2.151-2.492 ng/mL.
<b>Purity</b>	Greater than 95% as determined by SDS-PAGE.
<b>Sequence</b>	LEKQGSCRKKCFDASFRGLENCRCDVACKDRGDCCWDFEDTCVESTRIWMC NKFRCGETRLEASLCSCSDDCLQRKDCCADYKSVCCQGETSWLEENCDAQQ SQCPEGFDLPPVILFSMDGFRAEYLYTWDTLMPNINKLKTGCIHSKYMRAMYP TKTFPNHYTIVTGLYPESHGIIDNNMYDVNLNKNFSLSSKEQNNPAWWHGQP MWLTAMYQGLKAATYFWPGSEVAINGSFPSIYMPYNGSVPFEEERISTLLKWLD LPKAERPRFYTMFEEDSSGHAGGPVSARVIKALQVVDHAFGMLMEGLKQR NLHNCVNIILLADHGMDQTYCNKMEYMTDYFPRINFFYMYEGPAPRIRAHNIPH DFFSFNSEEIVRNLSCRKPDQHFKPYLTPDLPKRLHYAKNVRIDKVHFLVDQQ WLAVRSKSNNTNCGGGNHGYNNEFRSMEAIFLAHGSPFKEKTEVEPFENIEVY NLMCDLLRIQPAPNNGTHGSLNHLLKVPFYEPSHAEVSKFSVCGFANPLPTE SLDCFCPHLQNSTQLEQVNQMLNLTQEEITATVKVNLFPGRPRVLQKNVDHCL LYHREYVSGFGKAMRMPMWSSYTPQLGDTSPLPPTVPDCLRADVRVPPSE SQKCSFYLADKNITHGFLYPPASNRTSDSQYDALITSNLVPMYEEFRKMWDYF HSVLLIKHATERNGVNVVSGPIFDYNYDGHFDAPDEITKHLANTDVPIPTHYFVV LTSCKNKSHTPENCPGWLDVLPFIIPHRPTNVESCEGKPEALWVEERFTAHA RVRDVELLTGLDFYQDKVQPVSEILQLKTYLPTFETTI
<b>Source</b>	Mammalian cell
<b>Target Names</b>	ENPP3
<b>Expression Region</b>	48-875aa



<b>Notes</b>	Repeated freezing and thawing is not recommended. Store working aliquots at 4°C for up to one week.
<b>Tag Info</b>	C-terminal 10xHis-tagged
<b>Mol. Weight</b>	97.8 kDa
<b>Protein Length</b>	Partial

**Image**


(Tris-Glycine gel) Discontinuous SDS-PAGE (reduced) with 5% enrichment gel and 15% separation gel.



**Activity**  
 Measured by its binding ability in a functional ELISA. Immobilized Human ENPP3 at 2 µg/ml can bind anti-ENPP3 recombinant antibody (CSB-RA007681MA1HU), the EC<sub>50</sub> is 2.151-2.492 ng/mL.

<b>Endotoxin</b>	Less than 1.0 EU/ug as determined by LAL method.
<b>Reconstitution</b>	We recommend that this vial be briefly centrifuged prior to opening to bring the contents to the bottom. Please reconstitute protein in deionized sterile water to a concentration of 0.1-1.0 mg/mL. We recommend to add 5-50% of glycerol (final concentration) and aliquot for long-term storage at -20°C/-80°C. Our default final concentration of glycerol is 50%. Customers could use it as reference.
<b>Shelf Life</b>	The shelf life is related to many factors, storage state, buffer ingredients, storage temperature and the stability of the protein itself. Generally, the shelf life of liquid form is 6 months at -20°C/-80°C. The shelf life of lyophilized form is 12 months at -20°C/-80°C.