



Recombinant Mouse 1-phosphatidylinositol 4,5-bisphosphate phosphodiesterase delta-1 (Plcd1)

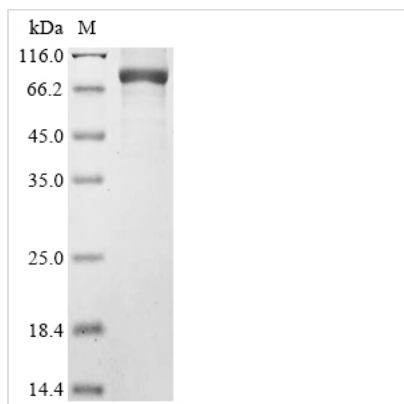
Product Code	CSB-BP854509MO
Abbreviation	Recombinant Mouse Plcd1 protein
Storage	The shelf life is related to many factors, storage state, buffer ingredients, storage temperature and the stability of the protein itself. Generally, the shelf life of liquid form is 6 months at -20°C/-80°C. The shelf life of lyophilized form is 12 months at -20°C/-80°C.
Uniprot No.	Q8R3B1
Form	Liquid or Lyophilized powder
Storage Buffer	If the delivery form is liquid, the default storage buffer is Tris/PBS-based buffer, 5%-50% glycerol. If the delivery form is lyophilized powder, the buffer before lyophilization is Tris/PBS-based buffer, 6% Trehalose.
Product Type	Recombinant Protein
Immunogen Species	Mus musculus (Mouse)
Purity	≥ 85% as determined by SDS-PAGE.
Sequence	MDSGRDFLTLHGLQDDPDLQALLKGSQLLKVKSSSWRRERFYKLQEDCKTIW QESRKVMRSPESQLFSIEDIQEVRMGHRTEGLEKFARDIPEDRCFSIVFKDQR NTLDLIAPSPADVQHWVQGLRKIIDRSGSMDQRQKLQHWIHSCLRKADKNKD NKMNFKEVKDFLKELVQVDDSYARKIFRECDHSQTDSLEDEEIEIFYRMLTQ RAEIDRAFAEAAGSAETLSVEKLVTFLLQHQQREEEAGPALALSLIERYPSETA KAQRQMTKDGFLMYLLSADGNAFSLAHRRVYQDMNQPLSHYLVSSSHNTYLL EDQLTGPSSTEAYIRALCKGCRCLELDCWDGPNQEPPIYHGYTFTSKILFCDVL RAIRDYAFKASPYPVILSLENHCSLEQQRVMAHHLRAILGPMLLDQPLDGVTT LPSPEQLKEKILLKGKLLGGLLPAGGENGPEATDVSEDEAAEMEDEAVRSQV QHHPKEDKLLVPELSDMVIYCKSVHFGGFSSPSTSGQAFYEMASFSERLAL LLQESGNSFVRHNVGHLSRIYPAGWRTDSSNYSPVEMWNGGCQIVALNFQTP GPEMDVYLGCFQDNGGCGYVLKPAFLRDPDTTFNSRALTQGPWWAPKKLRV WIISGQQLPKVNKNKNSIVDPKVIVEIHGVGQDVASRQTAVITNNGFNPRWDTE FEFVVAVPDLALVRFMVEDYDSSSKNDFIGQSTIPWNSLQGYRHHVHLLSKNG DLHPSATLRFVKISIQD
Research Area	Signal Transduction
Source	Baculovirus
Target Names	Plcd1
Expression Region	1-756aa
Notes	Repeated freezing and thawing is not recommended. Store working aliquots at 4°C for up to one week.
Tag Info	C-terminal 6xHis-tagged



Mol. Weight 91.5 kDa

Protein Length Full Length

Image



(Tris-Glycine gel) Discontinuous SDS-PAGE (reduced) with 5% enrichment gel and 15% separation gel.

Reconstitution

We recommend that this vial be briefly centrifuged prior to opening to bring the contents to the bottom. Please reconstitute protein in deionized sterile water to a concentration of 0.1-1.0 mg/mL. We recommend to add 5-50% of glycerol (final concentration) and aliquot for long-term storage at -20°C/-80°C. Our default final concentration of glycerol is 50%. Customers could use it as reference.

Shelf Life

The shelf life is related to many factors, storage state, buffer ingredients, storage temperature and the stability of the protein itself. Generally, the shelf life of liquid form is 6 months at -20°C/-80°C. The shelf life of lyophilized form is 12 months at -20°C/-80°C.