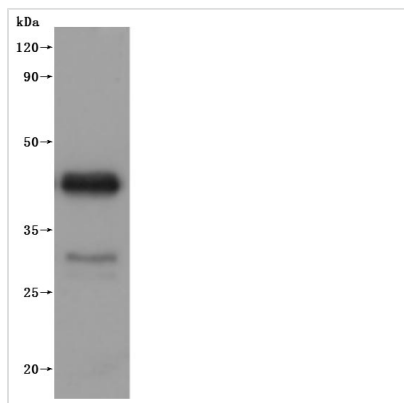


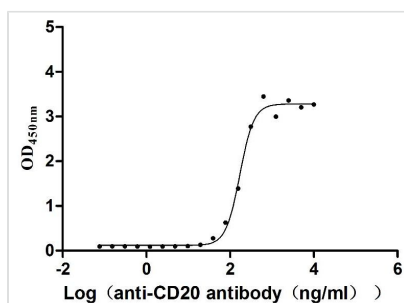


# Recombinant Dog B-lymphocyte antigen CD20 (MS4A1)-VLPs (Active)

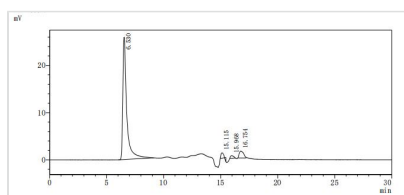
<b>Product Code</b>	CSB-MP661636DO
<b>Abbreviation</b>	Recombinant Dog MS4A1 protein-VLPs (Active)
<b>Storage</b>	The shelf life is related to many factors, storage state, buffer ingredients, storage temperature and the stability of the protein itself. Generally, the shelf life of liquid form is 6 months at -20°C/-80°C. The shelf life of lyophilized form is 12 months at -20°C/-80°C.
<b>Uniprot No.</b>	Q3C2E2
<b>Form</b>	Lyophilized powder
<b>Storage Buffer</b>	Lyophilized from a 0.2 µm filtered PBS, 6% Trehalose, pH 7.4
<b>Product Type</b>	Recombinant Protein
<b>Immunogen Species</b>	Canis lupus familiaris (Dog) (Canis familiaris)
<b>Biological Activity</b>	Measured by its binding ability in a functional ELISA. Immobilized Dog CD20 at 10 µg/mL can bind Anti-CD20 recombinant antibody (CSB-RA015007MA3HU), the EC <sub>50</sub> is 147.3-199.0 ng/mL.
<b>Purity</b>	Greater than 90% as determined by SEC-HPLC.
<b>Sequence</b>	MTTPRNSMSGTLPVDPMKSPTAMYPVQKIIPKRMPSSVVGPTQNFFMRESKTL GAVQIMNGLFHIALGSLLEMIHTDVCAPICITMWYPLWGGIMFIISGSLAAADKN PRKSLVKGKMMNSLSLFAAISGIIFLIMDIFNITISHFFKMENTLNLIKAPMPYVDIH NCDPANPSEKNLSIQYCGSIRSIVFLGVFAVMLIFAFFQKLVTAGIVENEWKKL CSKPKSDVVLLAAEEKKEQPIETTEEMVELTEIASQPKKEEDIEIIPVQEEEGEL EINFAEPPQEQESSPIENDSIP
<b>Source</b>	Mammalian cell
<b>Target Names</b>	MS4A1
<b>Expression Region</b>	1-297aa
<b>Notes</b>	Repeated freezing and thawing is not recommended. Store working aliquots at 4°C for up to one week.
<b>Tag Info</b>	C-terminal 10xHis-tagged (This tag can be tested only under denaturing conditions)
<b>Mol. Weight</b>	34.4 kDa
<b>Protein Length</b>	Full Length
<b>Image</b>	



CSB-MP661636DO is detected by Mouse anti-6\*His monoclonal antibody.



**Activity**  
 Measured by its binding ability in a functional ELISA. Immobilized Dog CD20 at 10 µg/ml can bind Anti-CD20 recombinant antibody (CSB-RA015007MA3HU), the EC<sub>50</sub> is 147.3-199.0 ng/mL.



The purity of VLPs was greater than 90% as determined by SEC-HPLC

### Endotoxin

Less than 1.0 EU/ug as determined by LAL method.

### Reconstitution

We recommend that this vial be briefly centrifuged prior to opening to bring the contents to the bottom. Please reconstitute protein in deionized sterile water to a concentration of 0.1-1.0 mg/mL. We recommend to add 5-50% of glycerol (final concentration) and aliquot for long-term storage at -20°C/-80°C. Our default final concentration of glycerol is 50%. Customers could use it as reference.

### Shelf Life

The shelf life is related to many factors, storage state, buffer ingredients, storage temperature and the stability of the protein itself. Generally, the shelf life of liquid form is 6 months at -20°C/-80°C. The shelf life of lyophilized form is 12 months at -20°C/-80°C.