

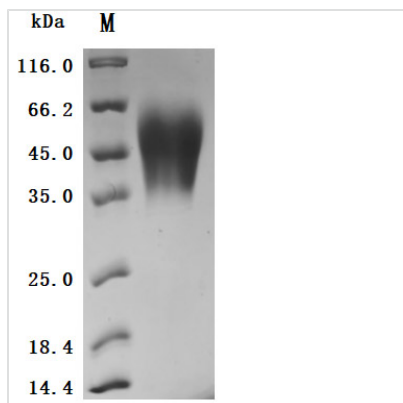


Recombinant Human Carcinoembryonic antigen-related cell adhesion molecule 6 (CEACAM6) (Active)

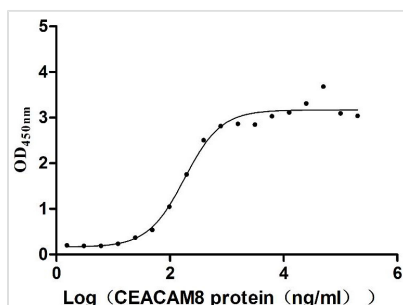
Product Code	CSB-MP005166HU
Abbreviation	Recombinant Human CEACAM6 protein (Active)
Storage	The shelf life is related to many factors, storage state, buffer ingredients, storage temperature and the stability of the protein itself. Generally, the shelf life of liquid form is 6 months at -20°C/-80°C. The shelf life of lyophilized form is 12 months at -20°C/-80°C.
Uniprot No.	P40199
Form	Lyophilized powder
Storage Buffer	Lyophilized from a 0.2 µm filtered 20 mM Tris-HCl, 0.5 M NaCl, 6% Trehalose, pH 8.0
Product Type	Recombinant Protein
Immunogen Species	Homo sapiens (Human)
Biological Activity	①Measured by its binding ability in a functional ELISA. Immobilized Human CEACAM6 at 2 µg/mL can bind Human CEACAM8 (CSB-MP005168HU), the EC50 is 144.7-223.8 ng/mL.②Measured by its binding ability in a functional ELISA. Immobilized Human CEACAM6 at 2 µg/mL can bind Anti-CEACAM5/CEACAM6 recombinant antibody (CSB-RA005165MA2HU), the EC50 is 0.9430-1.377 ng/mL.
Purity	Greater than 95% as determined by SDS-PAGE.
Sequence	KLTIESTPFNVAEGKEVLLLAHNLPQNRIGYSWYKGERVDGNSLIVGYVIGTQQ ATPGPAYSGRETIYPNASLLIQNVTQNDTGFYTLQVIKSDLVNEEATGQFHVYP ELPKPSSNNNSNPVEDKDAVAFTCEPEVQNTTYLWWWVNGQSLPVSRLQLS NGNMTLTLLSVKRNDAGSYECEIQNPASANRSDPVTNLNLYGPDGPTISPSKA NYRPGENLNLSCHAASNPPAQYSWFINGTFQQSTQELFIPNITVNNSGSYMCQ AHNSATGLNRTTVMITVSG
Research Area	Tags & Cell Markers
Source	Mammalian cell
Target Names	CEACAM6
Expression Region	35-320aa
Notes	Repeated freezing and thawing is not recommended. Store working aliquots at 4°C for up to one week.
Tag Info	C-terminal 10xHis-tagged
Mol. Weight	32.6 kDa


Protein Length

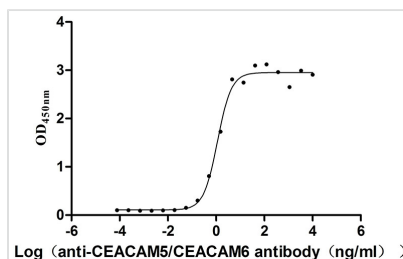
Full Length of Mature Protein

Image


(Tris-Glycine gel) Discontinuous SDS-PAGE (reduced) with 5% enrichment gel and 15% separation gel.


Activity

Measured by its binding ability in a functional ELISA. Immobilized Human CEACAM6 at 2 $\mu\text{g}/\text{mL}$ can bind Human CEACAM8 (CSB-MP005168HU), the EC_{50} is 144.7-223.8 ng/mL.


Activity

Measured by its binding ability in a functional ELISA. Immobilized Human CEACAM6 at 2 $\mu\text{g}/\text{mL}$ can bind Anti- CEACAM5/CEACAM6 recombinant antibody (CSB-RA005165MA2HU), the EC_{50} is 0.9430-1.377 ng/mL.

Endotoxin

 Less than 1.0 EU/ μg as determined by LAL method.

Reconstitution

We recommend that this vial be briefly centrifuged prior to opening to bring the contents to the bottom. Please reconstitute protein in deionized sterile water to a concentration of 0.1-1.0 mg/mL. We recommend to add 5-50% of glycerol (final concentration) and aliquot for long-term storage at $-20^{\circ}\text{C}/-80^{\circ}\text{C}$. Our default final concentration of glycerol is 50%. Customers could use it as reference.

Shelf Life

The shelf life is related to many factors, storage state, buffer ingredients, storage temperature and the stability of the protein itself.

Generally, the shelf life of liquid form is 6 months at $-20^{\circ}\text{C}/-80^{\circ}\text{C}$. The shelf life of lyophilized form is 12 months at $-20^{\circ}\text{C}/-80^{\circ}\text{C}$.