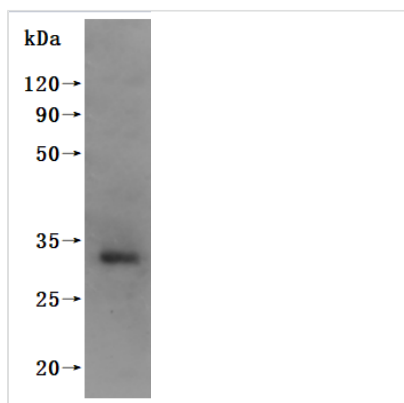




# Recombinant Human Kita-kyushu lung cancer antigen 1 (CT83)-VLPs

<b>Product Code</b>	CSB-MP711093HU
<b>Abbreviation</b>	Recombinant Human CT83 protein-VLPs
<b>Storage</b>	The shelf life is related to many factors, storage state, buffer ingredients, storage temperature and the stability of the protein itself. Generally, the shelf life of liquid form is 6 months at -20°C/-80°C. The shelf life of lyophilized form is 12 months at -20°C/-80°C.
<b>Uniprot No.</b>	Q5H943
<b>Form</b>	Lyophilized powder
<b>Storage Buffer</b>	PBS, pH 7.4, 6% trehalose
<b>Product Type</b>	Recombinant Protein
<b>Immunogen Species</b>	Homo sapiens (Human)
<b>Sequence</b>	MNFYLLLASSILCALIVFWKYRRFQRNTGEMSSNSTALALVRPSSSGLINSNTD NNLAVYDLSRDILNFPHSIARQKRILVNLMSVENKLVELEHTLLSKGFRGASP HRKST
<b>Research Area</b>	Cardiovascular
<b>Source</b>	Mammalian cell
<b>Target Names</b>	CT83
<b>Expression Region</b>	1-113aa
<b>Notes</b>	Repeated freezing and thawing is not recommended. Store working aliquots at 4°C for up to one week.
<b>Tag Info</b>	N-terminal 6xHis-tagged(This tag can be tested only under denaturing conditions)
<b>Mol. Weight</b>	14.0 kDa
<b>Protein Length</b>	Full Length

## Image



CSB-MP711093HU is detected by Mouse anti-6\*His monoclonal antibody.



---

<b>Endotoxin</b>	Less than 1.0 EU/ug as determined by LAL method.
<b>Reconstitution</b>	We recommend that this vial be briefly centrifuged prior to opening to bring the contents to the bottom. Please reconstitute protein in deionized sterile water to a concentration of 0.1-1.0 mg/mL. We recommend to add 5-50% of glycerol (final concentration) and aliquot for long-term storage at -20°C/-80°C. Our default final concentration of glycerol is 50%. Customers could use it as reference.
<b>Shelf Life</b>	The shelf life is related to many factors, storage state, buffer ingredients, storage temperature and the stability of the protein itself. Generally, the shelf life of liquid form is 6 months at -20°C/-80°C. The shelf life of lyophilized form is 12 months at -20°C/-80°C.

---