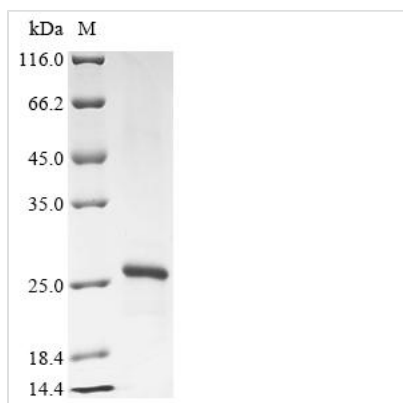




# Recombinant Dog Prorelaxin (RLN)

<b>Product Code</b>	CSB-YP874666DO
<b>Abbreviation</b>	Recombinant Dog RLN protein
<b>Storage</b>	The shelf life is related to many factors, storage state, buffer ingredients, storage temperature and the stability of the protein itself. Generally, the shelf life of liquid form is 6 months at -20°C/-80°C. The shelf life of lyophilized form is 12 months at -20°C/-80°C.
<b>Uniprot No.</b>	Q9TRM8
<b>Form</b>	Liquid or Lyophilized powder
<b>Storage Buffer</b>	If the delivery form is liquid, the default storage buffer is Tris/PBS-based buffer, 5%-50% glycerol. If the delivery form is lyophilized powder, the buffer before lyophilization is Tris/PBS-based buffer, 6% Trehalose.
<b>Product Type</b>	Recombinant Dog Prorelaxin(RLN)
<b>Immunogen Species</b>	Canis lupus familiaris (Dog) (Canis familiaris)
<b>Purity</b>	≥ 90% as determined by SDS-PAGE.
<b>Sequence</b>	TDDKKLKACGRDYVRLQIEVCGSIWWGRKAGQLRERRQISEPLAEVVPSSIIN DPEILSLMLQSIPGMPQELRIATRSGKEKLLRELHFVLEDSNLNLEEMKKTFLNT QFEAEDKSLSKLDKHPKRDNYIKMSDKCCNVGCTRRELASRC
<b>Research Area</b>	Others
<b>Source</b>	Yeast
<b>Target Names</b>	RLN
<b>Expression Region</b>	26-177aa
<b>Notes</b>	Repeated freezing and thawing is not recommended. Store working aliquots at 4°C for up to one week.
<b>Tag Info</b>	C-terminal 6xHis-tagged
<b>Mol. Weight</b>	19.1 kDa
<b>Protein Length</b>	Full Length of Mature Protein

## Image



(Tris-Glycine gel) Discontinuous SDS-PAGE (reduced) with 5% enrichment gel and 15% separation gel.



---

**Reconstitution**

We recommend that this vial be briefly centrifuged prior to opening to bring the contents to the bottom. Please reconstitute protein in deionized sterile water to a concentration of 0.1-1.0 mg/mL. We recommend to add 5-50% of glycerol (final concentration) and aliquot for long-term storage at -20°C/-80°C. Our default final concentration of glycerol is 50%. Customers could use it as reference.

---

**Shelf Life**

The shelf life is related to many factors, storage state, buffer ingredients, storage temperature and the stability of the protein itself.

Generally, the shelf life of liquid form is 6 months at -20°C/-80°C. The shelf life of lyophilized form is 12 months at -20°C/-80°C.