



Recombinant Human DNA polymerase theta (POLQ), partial

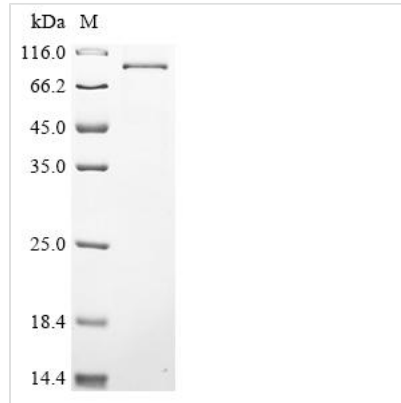
Product Code	CSB-BP018321HU1
Abbreviation	Recombinant Human POLQ protein, partial
Storage	The shelf life is related to many factors, storage state, buffer ingredients, storage temperature and the stability of the protein itself. Generally, the shelf life of liquid form is 6 months at -20°C/-80°C. The shelf life of lyophilized form is 12 months at -20°C/-80°C.
Uniprot No.	O75417
Form	Liquid or Lyophilized powder
Storage Buffer	If the delivery form is liquid, the default storage buffer is Tris/PBS-based buffer, 5%-50% glycerol. If the delivery form is lyophilized powder, the buffer before lyophilization is Tris/PBS-based buffer, 6% Trehalose.
Product Type	Recombinant Human DNA polymerase theta(POLQ),partial
Immunogen Species	Homo sapiens (Human)
Purity	≥ 85% as determined by SDS-PAGE.
Sequence	GFKDNSPISDTSFSLQLSQDGLQLTPASSSSSELSIIDVASDQNLFQTFIKWR CKKRFSISLACEKIRSLTSSKTATIGSRFKQASSPQEIPIRDDGFPIKGCDDTLVV GLAVCWGGRDAYYFSLQKEQKHSEISASLVPPSLDPSLTLKDRMWYLQSCLR KESDKECSVVIYDFIQSYKILLSCGISLEQSYEDPKVACWLLDPDSQEPTLHSI VTSFLPHELPLLEGMETSQGIQSLGLNAGSEHSGRYRASVESILIFNSMNQLNS LLQKENLQDVFRKVEmpsQYCLALLELNGIGFSTAECESQKHIMQAKLDAIETQ AYQLAGHSFSFTSSDDIAEVLFLLELKLPPNREMKNQGSKKT LGSTRRGIDNGR KLRLGRQFSTSKDVLNKLKALHPLPGLILEWRRITNAITKVVFP LQREKCLNPFL GMERIYPVQSHTATGRITFTEPNIQNVPRDFEIKMPTLVGESPPSQAVGKGLL PMGRGKYKKGFSVNPRCQAQMEERAADRGMFPFSISMRHAFVFPFGGSILAA DYSQLELRILAHLSHDRRLIQVLNTGADVFRSIAAEWKMI EPESVGDDL RQQAQ QICYGIIYGMGAKSLGEQMGIKENDAACYIDSFKSRYTGINQFMTETVKNCKRD GFVQ TILGRRRYLPGIKDNNPYRKAHAERQAIN TIVQGSAADIVKIATVNIQKQL ETFHSTFKSHGHREGMLQSDQTGLSRKRKLQGMFCPIRGGFFILQLHDELLYE VAEEDVVQVAQIVKNEMESAVKLSVCLKVKV KIGASWGELKDFDV
Research Area	Epigenetics and Nuclear Signaling
Source	Baculovirus
Target Names	POLQ
Expression Region	1792-2590aa
Notes	Repeated freezing and thawing is not recommended. Store working aliquots at 4°C for up to one week.
Tag Info	C-terminal 6xHis-tagged



Mol. Weight 92.3 kDa

Protein Length Partial

Image



(Tris-Glycine gel) Discontinuous SDS-PAGE (reduced) with 5% enrichment gel and 15% separation gel.

Reconstitution

We recommend that this vial be briefly centrifuged prior to opening to bring the contents to the bottom. Please reconstitute protein in deionized sterile water to a concentration of 0.1-1.0 mg/mL. We recommend to add 5-50% of glycerol (final concentration) and aliquot for long-term storage at -20°C/-80°C. Our default final concentration of glycerol is 50%. Customers could use it as reference.

Shelf Life

The shelf life is related to many factors, storage state, buffer ingredients, storage temperature and the stability of the protein itself. Generally, the shelf life of liquid form is 6 months at -20°C/-80°C. The shelf life of lyophilized form is 12 months at -20°C/-80°C.