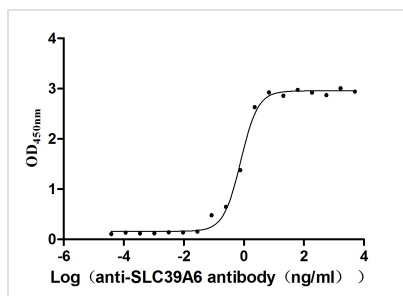




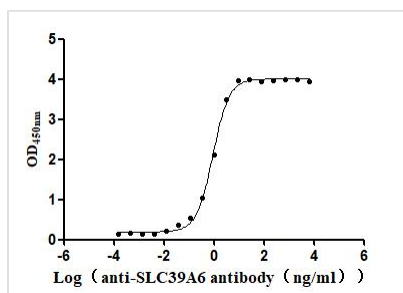
SLC39A6 Recombinant Monoclonal Antibody

Product Code	CSB-RA621669MA1HU
Storage	Upon receipt, store at -20°C or -80°C. Avoid repeated freeze.
Uniprot No.	Q13433
Immunogen	Recombinant Human SLC39A6 protein
Species Reactivity	Human, Macaca fascicularis
Tested Applications	ELISA
Form	Liquid
Conjugate	Non-conjugated
Storage Buffer	Preservative: 0.03% Proclin 300 Constituents: 50% Glycerol, 0.01M PBS, PH 7.4
Purification Method	Affinity-chromatography
Isotype	hIgG1
Clonality	Monoclonal
Product Type	Recombinant Antibody
Immunogen Species	Homo sapiens (Human)
Research Area	Immunology
Target Names	SLC39A6
Clone No.	13F1

Image



The Binding Activity of SLC39A6 with anti-SLC39A6 antibody
Activity: Measured by its binding ability in a functional ELISA. Immobilized Human SLC39A6(CSB-BP621669HU) at 1 µg/ml can bind Anti-SLC39A6-1 recombinant antibody, the EC₅₀ is 0.6873-0.9010 ng/mL.



The Binding Activity of Cynomolgus SLC39A6 with Anti-SLC39A6 Recombinant Antibody
Activity: Measured by its binding ability in a functional ELISA. Immobilized Cynomolgus SLC39A6 (CSB-BP5043MOV) at 2 µg/mL can bind Anti-SLC39A6 recombinant antibody. The EC₅₀ is 0.8290-0.9864 ng/mL.

Usage

For Research Use Only. Not for use in diagnostic or therapeutic procedures.