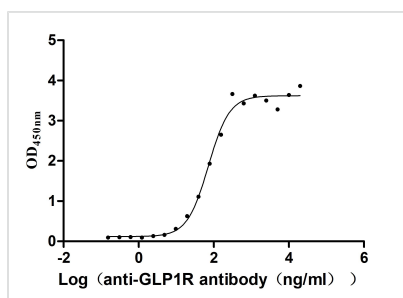




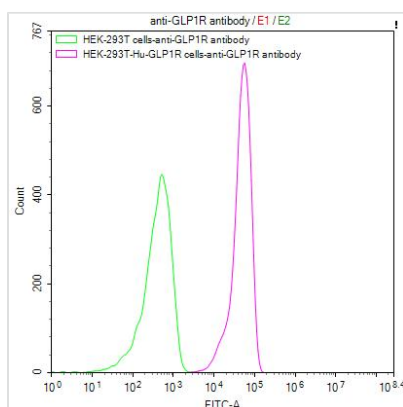
GLP1R Recombinant Monoclonal Antibody

Product Code	CSB-RA009514MA1HU
Storage	Upon receipt, store at -20°C or -80°C. Avoid repeated freeze.
Uniprot No.	P43220
Immunogen	Recombinant Human GLP1R protein
Species Reactivity	Human, Mouse,Rat
Tested Applications	ELISA, WB, FC; Recommended dilution: WB:1:500-1:2000,FC:1:20-1:200
Form	Liquid
Conjugate	Non-conjugated
Storage Buffer	Preservative: 0.03% Proclin 300 Constituents: 50% Glycerol, 0.01M PBS, PH 7.4
Purification Method	Affinity-chromatography
Isotype	hIgG4
Clonality	Monoclonal
Product Type	Recombinant Antibody
Immunogen Species	Homo sapiens (Human)
Research Area	Immunology
Target Names	GLP1R
Clone No.	7H7

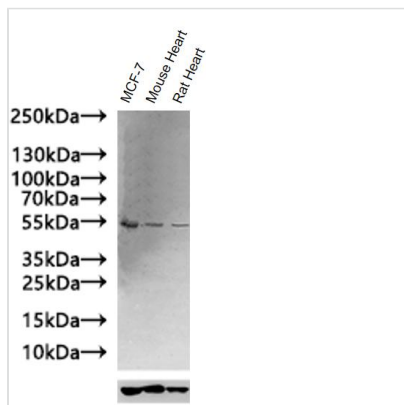
Image



The Binding Activity of GLP1R with anti-GLP1R antibody
Activity: Measured by its binding ability in a functional ELISA. Immobilized Human GLP1R(CSB-MP009514HUb1) at 2 µg/mL can bind Anti-GLP1R recombinant antibody, the EC₅₀ is 54.54-94.23 ng/mL.



Untransfected HEK-293T cells surface (green line) and transfected Human GLP1R HEK-293T stable cells surface (red line) were stained with anti-GLP1R antibody (2µg/1*10⁶cells), washed and then followed by FITC-conjugated anti-Human IgG Fc antibody and analyzed with flow cytometry.



Positive WB detected in: MCF-7 whole cell lysate(30 μ g), Mouse Heart tissue lysate(30 μ g), Rat Heart tissue lysate(30 μ g)
All lanes: GLP1R antibody at 1:1000
Secondary
Goat polyclonal to rabbit IgG at 1/20000 dilution
Predicted band size: 54 kDa
Observed band size: 54 kDa
Exposure time: 300s

Usage

For Research Use Only. Not for use in diagnostic or therapeutic procedures.