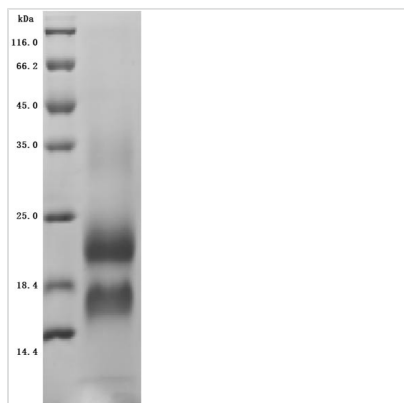




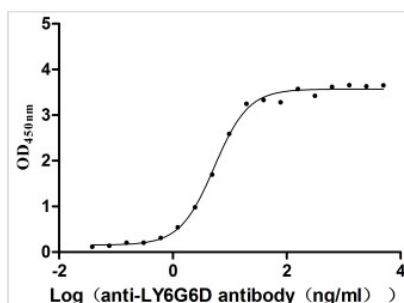
Recombinant *Macaca fascicularis* lymphocyte antigen 6 family member G6D (LY6G6D) (Active)

Product Code	CSB-YP4607MOV
Abbreviation	Recombinant Cynomolgus monkey LY6G6D protein (Active)
Storage	The shelf life is related to many factors, storage state, buffer ingredients, storage temperature and the stability of the protein itself. Generally, the shelf life of liquid form is 6 months at -20°C/-80°C. The shelf life of lyophilized form is 12 months at -20°C/-80°C.
Uniprot No.	UJY53414.1
Form	Lyophilized powder
Storage Buffer	Lyophilized from a 0.2 µm filtered 20 mM Tris-HCl, 0.5 M NaCl, 6% Trehalose, pH 8.0
Product Type	Recombinant Protein
Immunogen Species	<i>Macaca fascicularis</i> (Crab-eating macaque) (Cynomolgus monkey)
Biological Activity	Measured by its binding ability in a functional ELISA. Immobilized <i>Macaca fascicularis</i> LY6G6D at 2 µg/mL can bind Anti-LY6G6D recombinant antibody (CSB-RA013246MA1HU), the EC50 is 3.963-7.154 ng/mL.
Purity	≥ 95% as determined by SDS-PAGE.
Sequence	NRMRCYNCGGSPSSSCKEAVTTCGEGRPQPGLEQIKLPGNPPVTLIHQHPAC VAARHCNQVETESVGDVTYPAHRDCYLGDLNS
Source	Yeast
Target Names	LY6G6D
Expression Region	20-104aa
Notes	Repeated freezing and thawing is not recommended. Store working aliquots at 4°C for up to one week.
Tag Info	N-terminal 6xHis-tagged
Mol. Weight	11.1 kDa
Protein Length	Full Length of Mature Protein

Image



(Tris-Glycine gel) Discontinuous SDS-PAGE (reduced) with 5% enrichment gel and 15% separation gel.



Activity

Measured by its binding ability in a functional ELISA. Immobilized *Macaca fascicularis* LY6G6D at 2 $\mu\text{g/mL}$ can bind Anti-LY6G6D recombinant antibody (CSB-RA013246MA1HU), the EC_{50} is 3.963-7.154 ng/mL.

Endotoxin

Less than 1.0 EU/ μg as determined by LAL method.

Reconstitution

We recommend that this vial be briefly centrifuged prior to opening to bring the contents to the bottom. Please reconstitute protein in deionized sterile water to a concentration of 0.1-1.0 mg/mL. We recommend to add 5-50% of glycerol (final concentration) and aliquot for long-term storage at $-20^{\circ}\text{C}/-80^{\circ}\text{C}$. Our default final concentration of glycerol is 50%. Customers could use it as reference.

Shelf Life

The shelf life is related to many factors, storage state, buffer ingredients, storage temperature and the stability of the protein itself.

Generally, the shelf life of liquid form is 6 months at $-20^{\circ}\text{C}/-80^{\circ}\text{C}$. The shelf life of lyophilized form is 12 months at $-20^{\circ}\text{C}/-80^{\circ}\text{C}$.