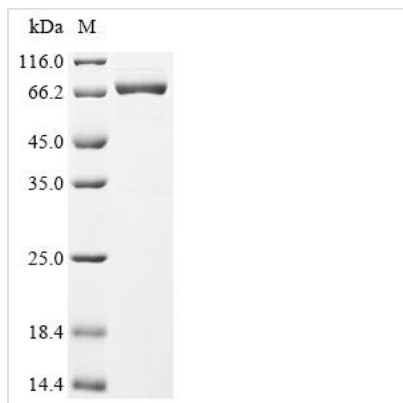




Recombinant Human cytomegalovirus Immediate early protein IE1 (UL123)

Product Code	CSB-EP522280HWW
Abbreviation	Recombinant Human cytomegalovirus Immediate early protein IE1
Storage	The shelf life is related to many factors, storage state, buffer ingredients, storage temperature and the stability of the protein itself. Generally, the shelf life of liquid form is 6 months at -20°C/-80°C. The shelf life of lyophilized form is 12 months at -20°C/-80°C.
Uniprot No.	F5HCM1
Form	Liquid or Lyophilized powder
Storage Buffer	If the delivery form is liquid, the default storage buffer is Tris/PBS-based buffer, 5%-50% glycerol. If the delivery form is lyophilized powder, the buffer before lyophilization is Tris/PBS-based buffer, 6% Trehalose.
Product Type	Recombinant Human cytomegalovirus Immediate early protein IE1(UL123)
Immunogen Species	Human cytomegalovirus (strain Merlin) (HHV-5) (Human herpesvirus 5)
Purity	Greater than 90% as determined by SDS-PAGE.
Sequence	MESSAKRKMDPDNPDEGPSSKVP RPETPVTKATTFLQTMLRKEVNSQLSLGD PLFPELAEESLKTFEQVTEDCNENPEKDVLTTELVKQIKVRVDMVRHRIKEHMLK KYTQTEEKFTGAFNMMGGCLQNALDILDKVHEPFEDMKCIGLTMQSMYENYIV PEDKREMWMACIKELHDVSKGAANKLGGALQAKARAKKDELRRKMMYMCYR NIEFFTKNSAFPKT TNGCSQAMAALQNL PQCSPDEIMSYAQKIFKILDEERDKV LTHIDHIFMDILTT CVETMCNEYKVTSDACMMTMYGGISLLSEFCRVLCCYVLE ETSVMLAKRPLITKPEVISVMKRRIEEICMKVFAQYILGADPLRVCSPSVDDLRAI AEESDEEEAIVAYTLATAGASSDSLVSPPESPVPATIP LSSVIVAENSDQEESE QSDEEQEEGAQEEREDTVSVKSEPVSEIEEVASEEEEEEDGAE EPTASGGKSTH PMVTRSKADQ
Research Area	Others
Source	E.coli
Target Names	UL123
Expression Region	1-491aa
Notes	Repeated freezing and thawing is not recommended. Store working aliquots at 4°C for up to one week.
Tag Info	N-terminal 10xHis-tagged and C-terminal Myc-tagged
Mol. Weight	62.6 kDa
Protein Length	Full Length
Image	



(Tris-Glycine gel) Discontinuous SDS-PAGE (reduced) with 5% enrichment gel and 15% separation gel.

Reconstitution

We recommend that this vial be briefly centrifuged prior to opening to bring the contents to the bottom. Please reconstitute protein in deionized sterile water to a concentration of 0.1-1.0 mg/mL. We recommend to add 5-50% of glycerol (final concentration) and aliquot for long-term storage at -20°C/-80°C. Our default final concentration of glycerol is 50%. Customers could use it as reference.

Shelf Life

The shelf life is related to many factors, storage state, buffer ingredients, storage temperature and the stability of the protein itself. Generally, the shelf life of liquid form is 6 months at -20°C/-80°C. The shelf life of lyophilized form is 12 months at -20°C/-80°C.