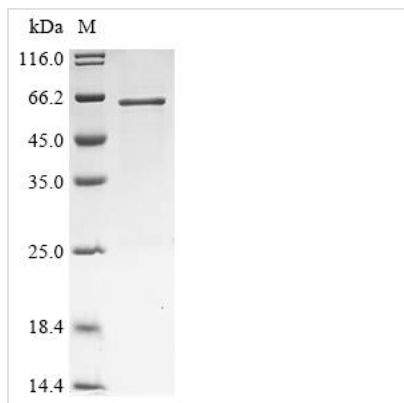




Recombinant Human Protein GOLM2 (GOLM2), partial

Product Code	CSB-EP764724HU
Abbreviation	Recombinant Human GOLM2 protein, partial
Storage	The shelf life is related to many factors, storage state, buffer ingredients, storage temperature and the stability of the protein itself. Generally, the shelf life of liquid form is 6 months at -20°C/-80°C. The shelf life of lyophilized form is 12 months at -20°C/-80°C.
Uniprot No.	Q6P4E1
Form	Liquid or Lyophilized powder
Storage Buffer	If the delivery form is liquid, the default storage buffer is Tris/PBS-based buffer, 5%-50% glycerol. If the delivery form is lyophilized powder, the buffer before lyophilization is Tris/PBS-based buffer, 6% Trehalose.
Product Type	Recombinant Human Protein GOLM2(GOLM2),partial
Immunogen Species	Homo sapiens (Human)
Purity	Greater than 85% as determined by SDS-PAGE.
Sequence	SSRHVLLQEEVAELQGQVQRTEVARGRLEKRNSDLLLVDTHTKKQIDQKEADY GRLSSRLQAREGLGKRCEDDKVKLQNNISYQMADIIHHLKEQLAELRQEFRLRQE DQLQDYRKNNTYLVKRLEYESFQCGQMKELRAQHEENIKKLADQFLEEQKQ ETQKIQSNDGKELDINNQVVPKNIPKVAENVADKNEEPSSNHIPHGKEQIKRGG DAGMPGIEENDLAKVDDLPPALRKPPISVSQHESHQAISHLPTGQPLSPNMPP DSHINHNGNPGTSKQNPSSPLQRLIPGSNLDSEPRIQTDLKQATKDRVSDFK LKQSRFFDENESPVDPQHGSKLADYNGDDGNVGEYEADKQAEAYNEEEDG DGGEEDVQDDEERELQMDPADYGKQHFNDVL
Research Area	Tags & Cell Markers
Source	E.coli
Target Names	GOLM2
Expression Region	36-436aa
Notes	Repeated freezing and thawing is not recommended. Store working aliquots at 4°C for up to one week.
Tag Info	N-terminal 10xHis-tagged and C-terminal Myc-tagged
Mol. Weight	53.1 kDa
Protein Length	Partial
Image	



(Tris-Glycine gel) Discontinuous SDS-PAGE (reduced) with 5% enrichment gel and 15% separation gel.

Reconstitution

We recommend that this vial be briefly centrifuged prior to opening to bring the contents to the bottom. Please reconstitute protein in deionized sterile water to a concentration of 0.1-1.0 mg/mL. We recommend to add 5-50% of glycerol (final concentration) and aliquot for long-term storage at -20°C/-80°C. Our default final concentration of glycerol is 50%. Customers could use it as reference.

Shelf Life

The shelf life is related to many factors, storage state, buffer ingredients, storage temperature and the stability of the protein itself. Generally, the shelf life of liquid form is 6 months at -20°C/-80°C. The shelf life of lyophilized form is 12 months at -20°C/-80°C.