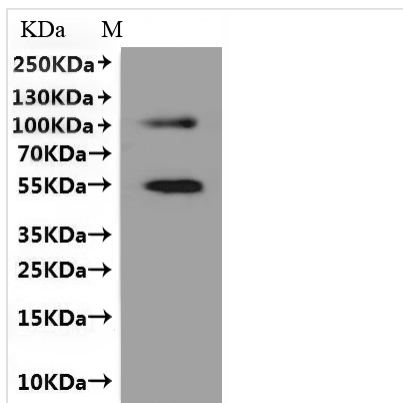


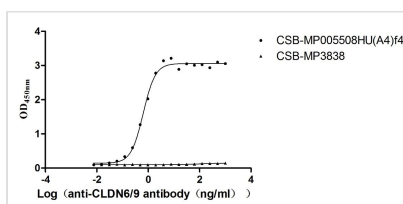


# Recombinant Human Claudin-6 (CLDN6)-VLPs, Fluorescent (Active)

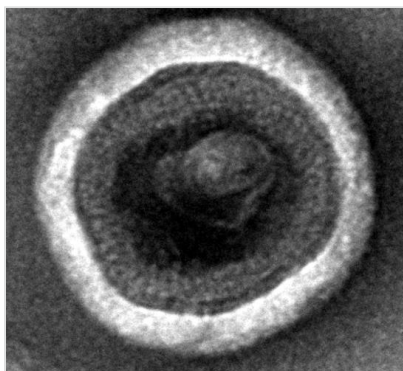
<b>Product Code</b>	CSB-MP005508HU(A4)f4
<b>Abbreviation</b>	Recombinant Human CLDN6 protein, Fluorescent-VLPs (Active)
<b>Storage</b>	The shelf life is related to many factors, storage state, buffer ingredients, storage temperature and the stability of the protein itself. Generally, the shelf life of liquid form is 6 months at -20°C/-80°C. The shelf life of lyophilized form is 12 months at -20°C/-80°C.
<b>Uniprot No.</b>	P56747
<b>Form</b>	Liquid or Lyophilized powder
<b>Storage Buffer</b>	If the delivery form is liquid, the default storage buffer is Tris/PBS-based buffer, 5%-50% glycerol. If the delivery form is lyophilized powder, the buffer before lyophilization is Tris/PBS-based buffer, 6% Trehalose, pH 8.0.
<b>Product Type</b>	Recombinant Human Claudin-6 (CLDN6)-VLPs
<b>Immunogen Species</b>	Homo sapiens (Human)
<b>Biological Activity</b>	Measured by its binding ability in a functional ELISA. Immobilized Human CLDN6 at 10 µg/mL can bind Anti-CLDN6/9 recombinant antibody (CSB-RA005508MA1HU), the EC50 is 0.5574-0.7361 ng/mL.
<b>Sequence</b>	MASAGMQILGVVLTLLGWVNGLVSCALPMWKVTAFIGNSIVVAQVWVEGLWM SCVVQSTGQMCKVYDSLALPQDLQAARALCVIALLVLFGLLVYLAGAKCT TCVEEKDSKARLVLTSGIVFVISGVLTLIPVCWTAHAIRDFYNPLVAEAQKREL GASLYLGWAASGLLLLGGLLCCTCPSSGGSQGPHYMARYSTSAPAIRGPS EYPTKNYV
<b>Research Area</b>	Microbiology
<b>Source</b>	Mammalian cell
<b>Target Names</b>	CLDN6
<b>Protein Names</b>	Recombinant Human Claudin-6 (CLDN6)-VLPs, Fluorescent (Active)
<b>Expression Region</b>	1-220aa
<b>Notes</b>	Repeated freezing and thawing is not recommended. Store the protein at -20°C/-80°C upon receiving it, and ensure to avoid repeated freezing and thawing, otherwise, it will affect the protein activity.
<b>Tag Info</b>	C-terminal EGFP-tagged
<b>Mol. Weight</b>	50.5 kDa
<b>Protein Length</b>	Full Length
<b>Image</b>	



CSB-MP005508HU(A4)f4 is detected by Mouse anti-GFP monoclonal antibody. The two bands respectively correspond to monomer, Homodimer.



Measured by its binding ability in a functional ELISA. Immobilized Human CLDN6 at 10  $\mu$ g/mL can bind Anti-CLDN6/9 recombinant antibody (CSB-RA005508MA1HU), the EC50 is 0.5574-0.7361 ng/mL.



The presence of VLP-like structures was confirmed by TEM.

### Reconstitution

We recommend that this vial be briefly centrifuged prior to opening to bring the contents to the bottom. Please reconstitute protein in deionized sterile water to a concentration of 0.1-1.0 mg/mL. Aliquot for long-term storage at -80°C. Solubilize for 60 minutes at room temperature with occasional gentle mixing. Avoid vigorous shaking or vortexing.

### Shelf Life

The shelf life is related to many factors, storage state, buffer ingredients, storage temperature and the stability of the protein itself. Generally, the shelf life of liquid form is 6 months at -20°C/-80°C. The shelf life of lyophilized form is 12 months at -20°C/-80°C.