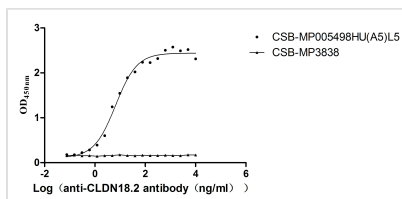


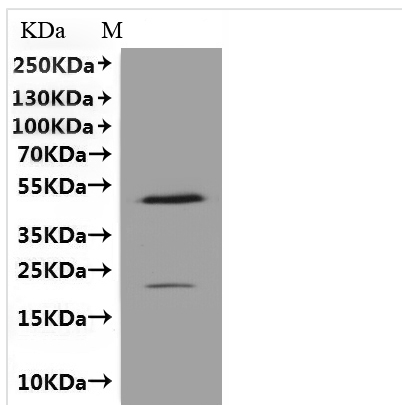


Recombinant Human Claudin-18.2 (CLDN18.2)-VLPs, Fluorescent (Active)

Product Code	CSB-MP005498HU(A5)I5
Abbreviation	Recombinant Human CLDN18.2 protein, Fluorescent-VLPs (Active)
Storage	The shelf life is related to many factors, storage state, buffer ingredients, storage temperature and the stability of the protein itself. Generally, the shelf life of liquid form is 6 months at -20°C/-80°C. The shelf life of lyophilized form is 12 months at -20°C/-80°C.
Uniprot No.	P56856
Form	Lyophilized powder
Storage Buffer	Lyophilized from a 0.2 μm filtered PBS, 6% Trehalose, pH 7.4
Product Type	Recombinant Protein
Immunogen Species	Homo sapiens (Human)
Biological Activity	Measured by its binding ability in a functional ELISA. Immobilized Human CLDN18.2 at 10 μg/mL can bind Anti-CLDN18.2 recombinant antibody (CSB-RA005505MA1HU), the EC50 is 5.115-8.534 ng/mL. The VLPs (CSB-MP3838) is negative control.
Sequence	MAVTACQGLGFVVSLLIGIAGIIAATCMDQWSTQDLYNNPVTAVFNYQGLWRSC VRESSGFTECRGYFTLLGLPAMLQAVRALMIVGIVLGAIGLLVSIFALKCIRIGSM EDSAKANMTLTSGIMFIVSGLCAIAGVSVFANMLVTNFWMSTANMYTGMGGM VQTVQTRYTFGAALFVGWVAGGLTLIGGVMMCIACRGLAPEETNYKAVSYHA SGHSVAYKPGGFKASTGFGSNTKNKKIYDGGARTEDEVQSYPSKHDYV
Source	Mammalian cell
Target Names	CLDN18.2
Expression Region	1-261aa
Notes	The VLPs are expressed from human 293 cells (HEK293). Mix the sample gently by repeatedly pipetting it up and down. Do not vortex. Repeated freezing and thawing is not recommended. Store the protein at -20°C/-80°C upon receiving it, and ensure to avoid repeated freezing and thawing, otherwise, it will affect the protein activity. The immunization strategy should be optimized (antigen dose, regimen and adjuvant).
Tag Info	C-terminal mCherry-tagged
Mol. Weight	52.3 kDa
Protein Length	Full Length of Isoform A2
Image	


Activity

Measured by its binding ability in a functional ELISA. Immobilized Human CLDN18.2 at 10 µg/ml can bind Anti-CLDN18.2 recombinant antibody (CSB-RA005498A1HU), the EC50 is 5.115-8.534 ng/mL. The VLPs (CSB-MP3838) is negative control.



CSB-MP005498HU(A5)I5 is detected by cherry antibody.

Endotoxin

Less than 1.0 EU/ug as determined by LAL method.

Reconstitution

We recommend that this vial be briefly centrifuged prior to opening to bring the contents to the bottom. Please reconstitute protein in deionized sterile water to a concentration of 0.1-1.0 mg/mL. We recommend to add 5-50% of glycerol (final concentration) and aliquot for long-term storage at -20°C/-80°C. Our default final concentration of glycerol is 50%. Customers could use it as reference.

Shelf Life

The shelf life is related to many factors, storage state, buffer ingredients, storage temperature and the stability of the protein itself.

Generally, the shelf life of liquid form is 6 months at -20°C/-80°C. The shelf life of lyophilized form is 12 months at -20°C/-80°C.