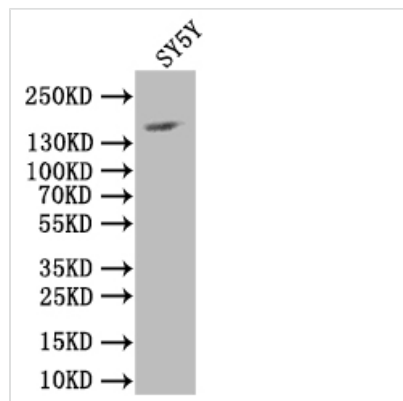




NCAM Recombinant Monoclonal Antibody

Product Code	CSB-RA121182A0HU
Storage	Upon receipt, store at -20°C or -80°C. Avoid repeated freeze.
Uniprot No.	P13591
Immunogen	A synthesized peptide derived from human NCAM
Species Reactivity	Human
Tested Applications	ELISA, WB, IHC; Recommended dilution: WB:1:500-1:2000, IHC:1:20-1:200
Form	Liquid
Conjugate	Non-conjugated
Storage Buffer	Rabbit IgG in phosphate buffered saline, pH 7.4, 150mM NaCl, 0.02% sodium azide and 50% glycerol.
Purification Method	Affinity-chromatography
Isotype	Rabbit IgG
Clonality	Monoclonal
Alias	antigen MSK39 identified by monoclonal antibody 5.1H11 antibody; antigen recognized by monoclonal antibody 5.1H11 antibody; CD56 antibody; cell adhesion molecule, neural, 1 antibody; MSK 39 antibody; MSK39 antibody; N-CAM-1 antibody; NCAM 1 antibody; NCAM antibody; NCAM C antibody; NCAM-1 antibody; NCAM1 antibody; NCAM1_HUMAN antibody; NCAMC antibody; Neural cell adhesion molecule 1 antibody; Neural cell adhesion molecule NCAM antibody; OTTHUMP00000235666 antibody
Product Type	Recombinant Antibody
Immunogen Species	Homo sapiens (Human)
Gene Names	NCAM1
Clone No.	13F2

Image



Western Blot

Positive WB detected in: SY5Y whole cell lysate

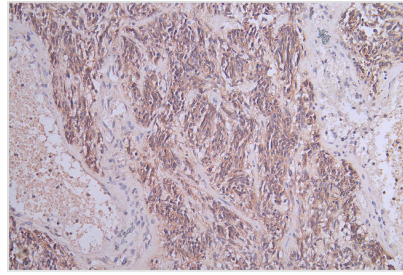
All lanes: NCAM antibody at 1:1000

Secondary

Goat polyclonal to rabbit IgG at 1/50000 dilution

Predicted band size: 120-220 kDa

Observed band size: 150 kDa



IHC image of CSB-RA121182A0HU diluted at 1:100 and staining in paraffin-embedded human glioma cancer performed on a Leica BondTM system. After dewaxing and hydration, antigen retrieval was mediated by high pressure in a citrate buffer (pH 6.0). Section was blocked with 10% normal goat serum 30min at RT. Then primary antibody (1% BSA) was incubated at 4°C overnight. The primary is detected by a Goat anti-rabbit polymer IgG labeled by HRP and visualized using 0.05% DAB.

Description

The NCAM recombinant monoclonal antibody expression typically involves the initial step of inserting the NCAM antibody-encoding gene into expression vectors. These vectors are then delivered into host cells via polyethyleneimine-mediated transfection. Culturing of the host cells leads to the production and secretion of the antibodies. Post-affinity chromatography purification, the antibodies' functionality is assessed through ELISA, WB, and IHC tests, confirming their capacity to recognize the human NCAM protein.

NCAM is a versatile cell adhesion molecule that plays a central role in various aspects of neural development, structure, and function. Its functions extend to neuronal migration, axon guidance, synaptic plasticity, cellular differentiation, and the response to neural injury.