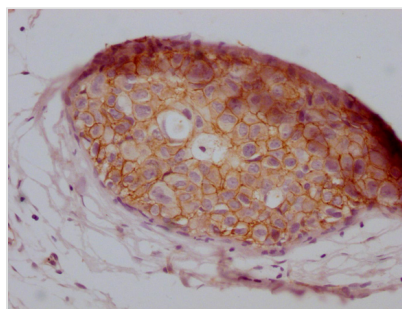




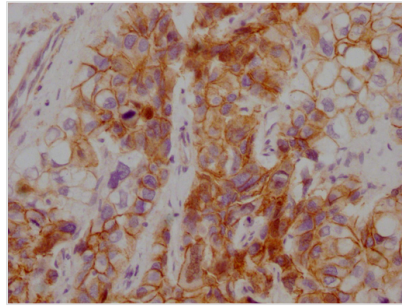
# CTNNB1 Monoclonal Antibody

<b>Product Code</b>	CSB-MA907551
<b>Storage</b>	Upon receipt, store at -20°C or -80°C. Avoid repeated freeze.
<b>Uniprot No.</b>	P35222
<b>Immunogen</b>	Synthesized peptide derived from human Beta-catenin
<b>Raised In</b>	Mouse
<b>Species Reactivity</b>	Human
<b>Tested Applications</b>	ELISA, IHC; Recommended dilution: IHC:1:20-1:200
<b>Relevance</b>	Involved in the regulation of cell adhesion. The majority of beta-catenin is localized to the cell membrane and is part of E-cadherin/catenin adhesion complexes which are proposed to couple cadherins to the actin cytoskeleton. Involved in signal transduction through the Wnt pathway. Nuclear beta-catenin it involved in transcriptional regulation by association with transcription factors of the TCF/LEF family.
<b>Form</b>	Liquid
<b>Conjugate</b>	Non-conjugated
<b>Storage Buffer</b>	Liquid in PBS containing 50% glycerol, 0.5% BSA and 0.02% sodium azide.
<b>Purification Method</b>	The antibody was affinity-purified from mouse ascites by affinity-chromatography using specific immunogen.
<b>Isotype</b>	IgG2b, Kappa
<b>Clonality</b>	Monoclonal
<b>Product Type</b>	Monoclonal Antibody
<b>Immunogen Species</b>	Homo sapiens (Human)
<b>Gene Names</b>	CTNNB1

## Image



IHC image of CSB-MA907551 diluted at 1:100 and staining in paraffin-embedded human breast cancer performed on a Leica Bond<sup>TM</sup> system. After dewaxing and hydration, antigen retrieval was mediated by high pressure in a citrate buffer (pH 6.0). Section was blocked with 10% normal goat serum 30min at RT. Then primary antibody (1% BSA) was incubated at 4°C overnight. The primary is detected by a Goat anti-mouse IgG polymer labeled by HRP and visualized using 0.05% DAB.



IHC image of CSB-MA907551 diluted at 1:100 and staining in paraffin-embedded human liver cancer performed on a Leica Bond™ system. After dewaxing and hydration, antigen retrieval was mediated by high pressure in a citrate buffer (pH 6.0). Section was blocked with 10% normal goat serum 30min at RT. Then primary antibody (1% BSA) was incubated at 4°C overnight. The primary is detected by a Goat anti-mouse IgG polymer labeled by HRP and visualized using 0.05% DAB.