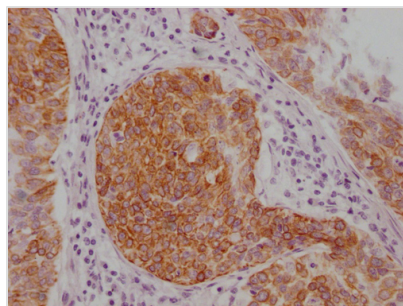




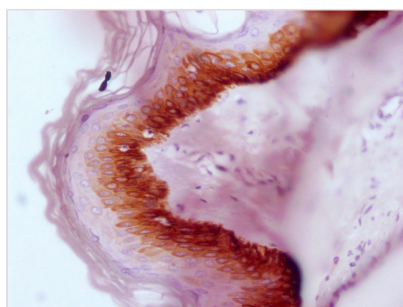
KRT14 Monoclonal Antibody

Product Code	CSB-MA589883
Storage	Upon receipt, store at -20°C or -80°C. Avoid repeated freeze.
Uniprot No.	P02533
Immunogen	Synthesized peptide derived from human Cytokeratin 14
Raised In	Mouse
Species Reactivity	Human
Tested Applications	ELISA, IHC; Recommended dilution: IHC:1:20-1:200
Form	Liquid
Conjugate	Non-conjugated
Storage Buffer	Liquid in PBS containing 50% glycerol, 0.5% BSA and 0.02% sodium azide.
Purification Method	The antibody was affinity-purified from mouse ascites by affinity-chromatography using specific immunogen.
Isotype	IgG1, Kappa
Clonality	Monoclonal
Product Type	Monoclonal Antibody
Immunogen Species	Homo sapiens (Human)
Target Names	KRT14
Clone No.	15B11

Image



IHC image of CSB-MA589883 diluted at 1:100 and staining in paraffin-embedded human cervical cancer performed on a Leica Bond™ system. After dewaxing and hydration, antigen retrieval was mediated by high pressure in a citrate buffer (pH 6.0). Section was blocked with 10% normal goat serum 30min at RT. Then primary antibody (1% BSA) was incubated at 4°C overnight. The primary is detected by a Goat anti-mouse IgG polymer labeled by HRP and visualized using 0.05% DAB.



IHC image of CSB-MA589883 diluted at 1:100 and staining in paraffin-embedded human skin tissue performed on a Leica Bond™ system. After dewaxing and hydration, antigen retrieval was mediated by high pressure in a citrate buffer (pH 6.0). Section was blocked with 10% normal goat serum 30min at RT. Then primary antibody (1% BSA) was incubated at 4°C overnight. The primary is detected by a Goat anti-mouse IgG polymer labeled by HRP and visualized using 0.05% DAB.



Usage

For Research Use Only. Not for use in diagnostic or therapeutic procedures.