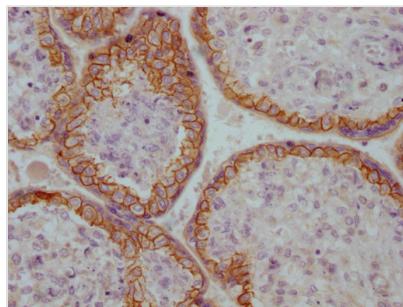




CDH1 Monoclonal Antibody

Product Code	CSB-MA196808
Storage	Upon receipt, store at -20°C or -80°C. Avoid repeated freeze.
Uniprot No.	P12830
Immunogen	Synthesized peptide derived from human E-Cadherin
Raised In	Mouse
Species Reactivity	Human
Tested Applications	ELISA, IHC; Recommended dilution: IHC:1:20-1:200
Relevance	Cadherins are calcium-dependent cell adhesion proteins (PubMed:11976333). They preferentially interact with themselves in a homophilic manner in connecting cells; cadherins may thus contribute to the sorting of heterogeneous cell types. CDH1 is involved in mechanisms regulating cell-cell adhesions, mobility and proliferation of epithelial cells (PubMed:11976333). Has a potent invasive suppressor role. It is a ligand for integrin alpha-E/beta-7.
Form	Liquid
Conjugate	Non-conjugated
Storage Buffer	Liquid in PBS containing 50% glycerol, 0.5% BSA and 0.02% sodium azide.
Purification Method	The antibody was affinity-purified from mouse ascites by affinity-chromatography using specific immunogen.
Isotype	IgG1, Kappa
Clonality	Monoclonal
Product Type	Monoclonal Antibody
Immunogen Species	Homo sapiens (Human)
Gene Names	CDH1

Image



IHC image of CSB-MA196808 diluted at 1:100 and staining in paraffin-embedded human placenta tissue performed on a Leica BondTM system. After dewaxing and hydration, antigen retrieval was mediated by high pressure in a citrate buffer (pH 6.0). Section was blocked with 10% normal goat serum 30min at RT. Then primary antibody (1% BSA) was incubated at 4°C overnight. The primary is detected by a Goat anti-mouse IgG polymer labeled by HRP and visualized using 0.05% DAB.