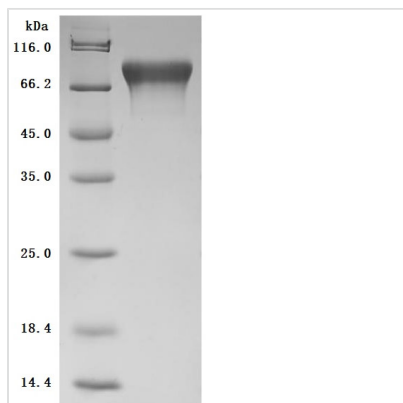


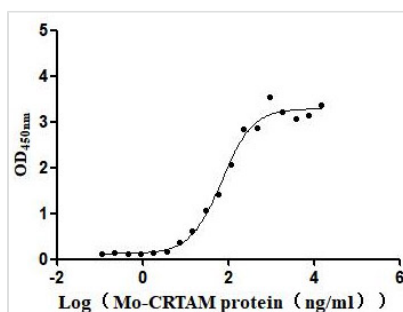


Recombinant Mouse Cell adhesion molecule 1 (Cadm1), partial (Active)

| | |
|----------------------------|---|
| Product Code | CSB-MP004425MO |
| Abbreviation | Recombinant Mouse Cadm1 protein, partial (Active) |
| Storage | The shelf life is related to many factors, storage state, buffer ingredients, storage temperature and the stability of the protein itself. Generally, the shelf life of liquid form is 6 months at -20°C/-80°C. The shelf life of lyophilized form is 12 months at -20°C/-80°C. |
| Uniprot No. | Q8R5M8 |
| Form | Lyophilized powder |
| Storage Buffer | Lyophilized from a 0.2 µm filtered 20 mM Tris-HCl, 0.5 M NaCl, 6% Trehalose, pH 8.0 |
| Product Type | Recombinant Protein |
| Immunogen Species | Mus musculus (Mouse) |
| Biological Activity | ①Measured by its binding ability in a functional ELISA. Immobilized Mouse CADM1 at 2 µg/mL can bind Mouse CRTAM (CSB-MP614820MO), the EC50 is 52.61-92.92 ng/mL. |
| Purity | Greater than 95% as determined by SDS-PAGE. |
| Sequence | QNLFTKDVTVIEGEVATISCQVNKSDDSVIQLLNPNRQTIYFRDFRPLKDSRFQL LNFSSSELKVLSTNVSISDEGRYFCQLYTDPPQESYTTITVLVPPRNLMDIQKD TAVEGEEIEVNCTAMASKPATTIRWFKGNKELKKGKSEVEEWSDMYTVTSQLM LKVHKEDDGVVICQVEHPAVTGNLQTQRYLEVQYKPVVHIQMTYPLQGLTRE GDAFELTCEAIGKPQPMVTWVRVDEMPQHAVLSGPNLFINNLNKTDTNGTY RCEASNIVGKAHSDYMLYVYDPPTTIPPTTTTTTTTTTTTTTTTTTTTTTTTILTIITDTTATTEPA VHDSRAGEEGTIGAVDH |
| Source | Mammalian cell |
| Target Names | Cadm1 |
| Expression Region | 48-388aa |
| Notes | Repeated freezing and thawing is not recommended. Store working aliquots at 4°C for up to one week. |
| Tag Info | C-terminal 10xHis-tagged |
| Mol. Weight | 39.6 kDa |
| Protein Length | Partial |
| Image | |



(Tris-Glycine gel) Discontinuous SDS-PAGE (reduced) with 5% enrichment gel and 15% separation gel.



Activity
 Measured by its binding ability in a functional ELISA. Immobilized Mouse CADM1 at 2 μ g/mL can bind Mouse CRTAM (CSB-MP614820MO)? the EC₅₀ is 52.61-92.92 ng/mL.

Endotoxin

Less than 1.0 EU/ug as determined by LAL method.

Reconstitution

We recommend that this vial be briefly centrifuged prior to opening to bring the contents to the bottom. Please reconstitute protein in deionized sterile water to a concentration of 0.1-1.0 mg/mL. We recommend to add 5-50% of glycerol (final concentration) and aliquot for long-term storage at -20°C/-80°C. Our default final concentration of glycerol is 50%. Customers could use it as reference.

Shelf Life

The shelf life is related to many factors, storage state, buffer ingredients, storage temperature and the stability of the protein itself. Generally, the shelf life of liquid form is 6 months at -20°C/-80°C. The shelf life of lyophilized form is 12 months at -20°C/-80°C.