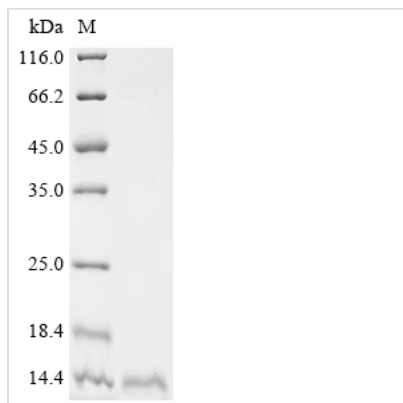




Recombinant Mesocricetus auratus T-cell surface glycoprotein CD3 epsilon chain (Cd3e), partial

Product Code	CSB-EP4828MRG
Abbreviation	Recombinant Mesocricetus auratus Cd3e protein, partial
Storage	The shelf life is related to many factors, storage state, buffer ingredients, storage temperature and the stability of the protein itself. Generally, the shelf life of liquid form is 6 months at -20°C/-80°C. The shelf life of lyophilized form is 12 months at -20°C/-80°C.
Uniprot No.	A0A3Q0CNZ4
Form	Liquid or Lyophilized powder
Storage Buffer	If the delivery form is liquid, the default storage buffer is Tris/PBS-based buffer, 5%-50% glycerol. If the delivery form is lyophilized powder, the buffer before lyophilization is Tris/PBS-based buffer, 6% Trehalose.
Product Type	Recombinant Mesocricetus auratus T-cell surface glycoprotein CD3 epsilon chain(Cd3e),partial
Immunogen Species	Mesocricetus auratus (Golden hamster)
Sensitivity	Not Test
Purity	Greater than 90% as determined by SDS-PAGE.
Sequence	DDTENPDNEAQKHYYKVSISGTRIELTCPLESDFIHWEKNDKVLPEENEKTLVLQDFSEVGDSDGYACYLESSSEKNAYLYLKARVCENCVEVDLT
Research Area	Others
Source	E.coli
Target Names	Cd3e
Expression Region	22-116aa
Notes	Repeated freezing and thawing is not recommended. Store working aliquots at 4°C for up to one week.
Tag Info	N-terminal 6xHis-tagged and C-terminal Strep II-tagged
Mol. Weight	13.0 kDa
Protein Length	Partial
Image	



(Tris-Glycine gel) Discontinuous SDS-PAGE (reduced) with 5% enrichment gel and 15% separation gel.

Reconstitution

We recommend that this vial be briefly centrifuged prior to opening to bring the contents to the bottom. Please reconstitute protein in deionized sterile water to a concentration of 0.1-1.0 mg/mL. We recommend to add 5-50% of glycerol (final concentration) and aliquot for long-term storage at -20°C/-80°C. Our default final concentration of glycerol is 50%. Customers could use it as reference.

Shelf Life

The shelf life is related to many factors, storage state, buffer ingredients, storage temperature and the stability of the protein itself. Generally, the shelf life of liquid form is 6 months at -20°C/-80°C. The shelf life of lyophilized form is 12 months at -20°C/-80°C.