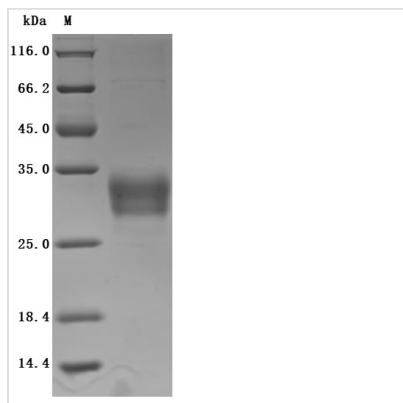


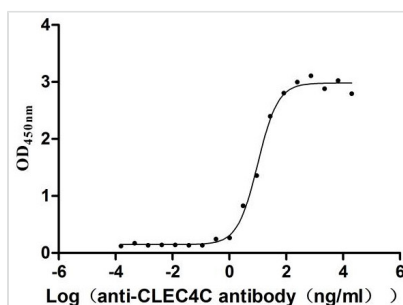


Recombinant Human C-type lectin domain family 4 member C (CLEC4C), partial (Active)

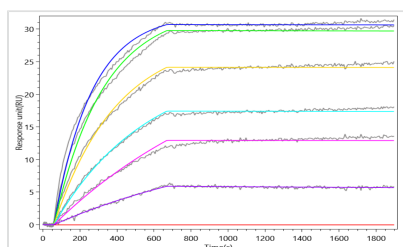
Product Code	CSB-MP855470HUh7
Abbreviation	Recombinant Human CLEC4C protein, partial (Active)
Storage	The shelf life is related to many factors, storage state, buffer ingredients, storage temperature and the stability of the protein itself. Generally, the shelf life of liquid form is 6 months at -20°C/-80°C. The shelf life of lyophilized form is 12 months at -20°C/-80°C.
Uniprot No.	Q8WTT0
Form	Lyophilized powder
Storage Buffer	Lyophilized from a 0.2 µm filtered 20 mM Tris-HCl, 0.5 M NaCl, 6% Trehalose, pH 8.0
Product Type	Recombinant Protein
Immunogen Species	Homo sapiens (Human)
Biological Activity	Measured by its binding ability in a functional ELISA. Immobilized Human CLEC4C at 2 µg/mL can bind Anti-CLEC4C recombinant antibody(CSB-RA855470MA1HU)?the EC50 is 7.658-12.99 ng/mL.
Purity	≥ 95% as determined by SDS-PAGE.
Sequence	NFMYSKTVKRLSKLREYQQYHPSLTCVMEGKDIEDWSCCPTPWTSFQSSCYF ISTGMQSWTKSQKNCSVMGADLVVINTREEQDFIIQNLKRNSSYFLGLSDPGG RRHWQWVDQTPYNENVTFWHSGEPNLDERCAIINFRSSEEWGWNDIHCHV PQKSICKMKKIYI
Source	Mammalian cell
Target Names	CLEC4C
Expression Region	45-213aa
Notes	Repeated freezing and thawing is not recommended. Store working aliquots at 4°C for up to one week.
Tag Info	N-terminal 6xHis-Myc-tagged
Mol. Weight	24.1 kDa
Protein Length	Partial
Image	



(Tris-Glycine gel) Discontinuous SDS-PAGE (reduced) with 5% enrichment gel and 15% separation gel.



Activity
 Measured by its binding ability in a functional ELISA. Immobilized Human CLEC4C at 2 μ g/mL can bind Anti-CLEC4C recombinant antibody(CSB-RA855470MA1HU)?the EC₅₀ is 7.658-12.99 ng/mL.



CLEC4C Recombinant Monoclonal Antibody (CSB-RA855470MA1HU) captured on Protein A Chip can bind Recombinant Human CLEC4C protein with an affinity constant of 0.188 nM as detected by MetaSPR Assay (WeSPRTM 200).

Endotoxin

Less than 1.0 EU/ug as determined by LAL method.

Reconstitution

We recommend that this vial be briefly centrifuged prior to opening to bring the contents to the bottom. Please reconstitute protein in deionized sterile water to a concentration of 0.1-1.0 mg/mL. We recommend to add 5-50% of glycerol (final concentration) and aliquot for long-term storage at -20°C/-80°C. Our default final concentration of glycerol is 50%. Customers could use it as reference.

Shelf Life

The shelf life is related to many factors, storage state, buffer ingredients, storage temperature and the stability of the protein itself.

Generally, the shelf life of liquid form is 6 months at -20°C/-80°C. The shelf life of lyophilized form is 12 months at -20°C/-80°C.