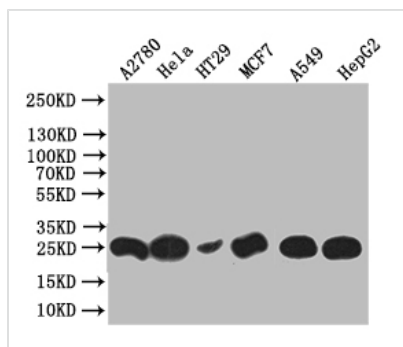




WFDC2 Recombinant Monoclonal Antibody

Product Code	CSB-RA964489A0HU
Storage	Upon receipt, store at -20°C or -80°C. Avoid repeated freeze.
Uniprot No.	Q14508
Immunogen	A synthesized peptide derived from Human WFDC2
Species Reactivity	Human
Tested Applications	ELISA, WB, FC; Recommended dilution: WB:1:500-1:2000, FC:1:50-1:200
Form	Liquid
Conjugate	Non-conjugated
Storage Buffer	Rabbit IgG in 10mM phosphate buffered saline , pH 7.4, 150mM sodium chloride, 0.05% BSA, 0.02% sodium azide and 50% glycerol.
Purification Method	Affinity-chromatography
Isotype	Rabbit IgG
Clonality	Monoclonal
Product Type	Recombinant Antibody
Immunogen Species	Homo sapiens (Human)
Research Area	Tags & Cell Markers
Target Names	WFDC2
Clone No.	17D2

Image



Western Blot

Positive WB detected in: HT29 whole cell lysate, HeLa whole cell lysate, HT29 whole cell lysate, MCF7 whole cell lysate, A549 whole cell lysate, HEPG2 whole cell lysate

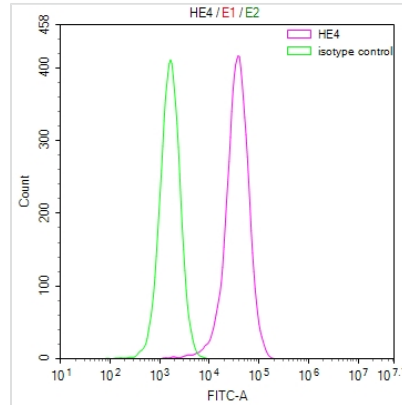
All lanes: HE4 antibody at 1:1000

Secondary

Goat polyclonal to rabbit IgG at 1/50000 dilution

Predicted band size: 25 kDa

Observed band size: 25 kDa



Overlay Peak curve showing MCF-7 cells stained with CSB-RA964489A0HU (red line) at 1:50. The cells were fixed in 4% formaldehyde and permeated by 0.2% TritonX-100. Then 10% normal goat serum to block non-specific protein-protein interactions followed by the antibody (1 μ g/1*10⁶cells) for 45min at 4?. The secondary antibody used was FITC-conjugated Goat Anti-rabbit IgG(H+L) at 1:200 dilution for 35min at 4?. Control antibody (green line) was rabbit IgG (1 μ g/1*10⁶cells) used under the same conditions. Acquisition of >10,000 events was performed.

Usage

For Research Use Only. Not for use in diagnostic or therapeutic procedures.