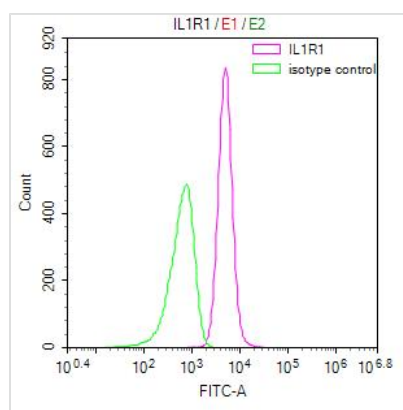




IL1R1 Recombinant Monoclonal Antibody

Product Code	CSB-RA011621MA1HU
Storage	Upon receipt, store at -20°C or -80°C. Avoid repeated freeze.
Uniprot No.	P14778
Immunogen	Recombinant Human IL1R1 protein
Species Reactivity	Human, Mouse
Tested Applications	ELISA, FC; Recommended dilution: FC:1:20-1:500
Form	Liquid
Conjugate	Non-conjugated
Storage Buffer	Preservative: 0.03% Proclin 300 Constituents: 50% Glycerol, 0.01M PBS, PH 7.4
Purification Method	Affinity-chromatography
Isotype	Mouse IgG
Clonality	Monoclonal
Product Type	Recombinant Antibody
Immunogen Species	Homo sapiens (Human)
Research Area	Cardiovascular;Immunology;Stem cells
Target Names	IL1R1
Clone No.	26F8

Image



Overlay Peak curve showing NIH/3T3 cells surface stained with CSB-RA011621MA1HU (red line) at 1:50. Then 10% normal goat serum was incubated to block non-specific protein-protein interactions followed by the antibody (1µg/1*10⁶cells) for 45 min at 4°C. The secondary antibody used was FITC-conjugated Goat Anti-Mouse IgG(H+L) at 1/200 dilution for 35 min at 4°C. Isotype control antibody (green line) was mouse IgG1 (1µg/1*10⁶cells) used under the same conditions. Acquisition of >10,000 events was performed.

Usage

For Research Use Only. Not for use in diagnostic or therapeutic procedures.