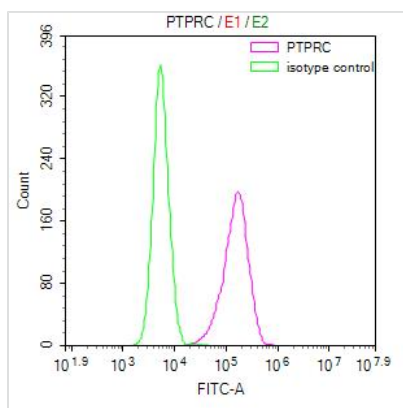




PTPRC Recombinant Monoclonal Antibody

Product Code	CSB-RA019049MA1HU
Storage	Upon receipt, store at -20°C or -80°C. Avoid repeated freeze.
Uniprot No.	P08575
Immunogen	Recombinant Human PTPRC protein
Species Reactivity	Human
Tested Applications	ELISA, FC; Recommended dilution: FC:1:20-1:500
Form	Liquid
Conjugate	Non-conjugated
Storage Buffer	Preservative: 0.03% Proclin 300 Constituents: 50% Glycerol, 0.01M PBS, PH 7.4
Purification Method	Affinity-chromatography
Isotype	Mouse IgG
Clonality	Monoclonal
Product Type	Recombinant Antibody
Immunogen Species	Homo sapiens (Human)
Research Area	Immunology
Target Names	PTPRC
Clone No.	29A11

Image



Overlay Peak curve showing 293 cells surface stained with CSB-RA019049MA1HU (red line) at 1:100. Then 10% normal goat serum was incubated to block non-specific protein-protein interactions followed by the antibody (1µg/1*10⁶cells) for 45 min at 4°C. The secondary antibody used was FITC-conjugated Goat Anti-Mouse IgG(H+L) at 1/200 dilution for 35 min at 4°C. Isotype control antibody (green line) was mouse IgG1 (1µg/1*10⁶cells) used under the same conditions. Acquisition of >10,000 events was performed.

Usage

For Research Use Only. Not for use in diagnostic or therapeutic procedures.