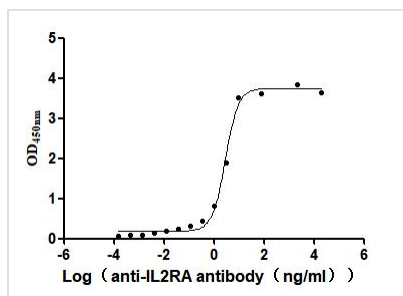




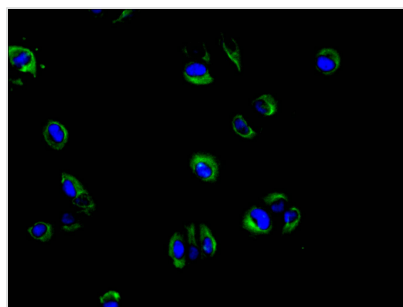
IL2RA Recombinant Monoclonal Antibody

| | |
|----------------------------|--|
| Product Code | CSB-RA011649MA1HU |
| Storage | Upon receipt, store at -20°C or -80°C. Avoid repeated freeze. |
| Uniprot No. | P01589 |
| Immunogen | Recombinant Human IL2RA protein |
| Species Reactivity | Human |
| Tested Applications | ELISA, IF; Recommended dilution: IF:1:20-1:200 |
| Form | Liquid |
| Conjugate | Non-conjugated |
| Storage Buffer | Preservative: 0.03% Proclin 300 Constituents: 50% Glycerol, 0.01M PBS, PH 7.4 |
| Purification Method | Affinity-chromatography |
| Isotype | hIgG1 |
| Clonality | Monoclonal |
| Product Type | Recombinant Antibody |
| Immunogen Species | Homo sapiens (Human) |
| Research Area | Immunology |
| Target Names | IL2RA |
| Clone No. | 5F10 |

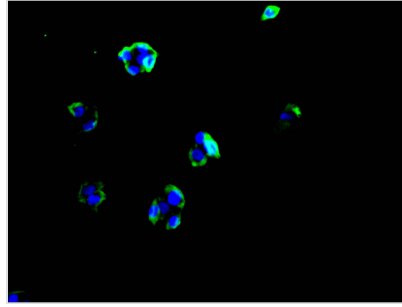
Image



The Binding Activity of Human IL2RA with Anti-IL2RA Recombinant Antibody
Activity: Measured by its binding ability in a functional ELISA. Immobilized Human IL2RA (CSB-MP011649HU3) at 2 μ g/mL can bind Anti-IL2RA recombinant antibody, the EC₅₀ is 2.463-3.353 ng/mL.



Immunofluorescence staining of HeLa cell with CSB-RA011649MA1HU at 1:30, counter-stained with DAPI. The cells were fixed in 4% formaldehyde and blocked in 10% normal Goat Serum. The cells were then incubated with the antibody overnight at 4C. The secondary antibody was FITC-conjugated AffiniPure Goat Anti-human IgG(H+L).



Immunofluorescence staining of HEPG2 cell with CSB-RA011649MA1HU at 1:30, counter-stained with DAPI. The cells were fixed in 4% formaldehyde and blocked in 10% normal Goat Serum. The cells were then incubated with the antibody overnight at 4C. The secondary antibody was FITC-conjugated AffiniPure Goat Anti-human IgG(H+L).

Usage

For Research Use Only. Not for use in diagnostic or therapeutic procedures.