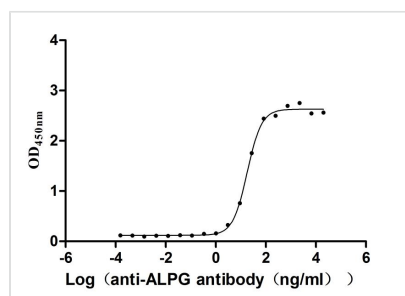




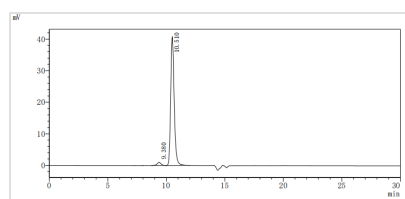
ALPG Recombinant Monoclonal Antibody

Product Code	CSB-RA001633MA1HU
Storage	Upon receipt, store at -20°C or -80°C. Avoid repeated freeze.
Uniprot No.	P10696
Immunogen	Recombinant Human ALPG protein
Species Reactivity	Human
Tested Applications	ELISA
Form	Liquid
Conjugate	Non-conjugated
Storage Buffer	Preservative: 0.03% Proclin 300 Constituents: 50% Glycerol, 0.01M PBS, PH 7.4
Purification Method	Affinity-chromatography
Isotype	hIgG1
Clonality	Monoclonal
Product Type	Recombinant Antibody
Immunogen Species	Homo sapiens (Human)
Purity	Greater than 95% as determined by SEC-HPLC.
Research Area	Cancer;Cell biology;Tags & Cell Markers
Gene Names	ALPG
Clone No.	29A5

Image



The Binding Activity of Human ALPG with Anti-ALPG Recombinant Antibody
Activity: Measured by its binding ability in a functional ELISA. Immobilized Human ALPG (CSB-MP001633HU) at 2 µg/mL can bind Anti-ALPG recombinant antibody, the EC₅₀ is 14.09-23.17 ng/mL.



The purity of ALPG was greater than 95% as determined by SEC-HPLC

Description

The ALPG recombinant monoclonal antibody was generated through the insertion of ALPG antibody genes into plasmid vectors, followed by transfection



into appropriate host cells for exogenous protein expression. Subsequently, this recombinant monoclonal antibody underwent purification using affinity chromatography and validation for ELISA. In functional ELISA assays, it was observed that the ALPG recombinant monoclonal antibody could effectively bind to the human ALPG protein (CSB-MP001633HU) at a concentration of 2 µg/mL, demonstrating an EC₅₀ range of 14.09-23.17 ng/mL.