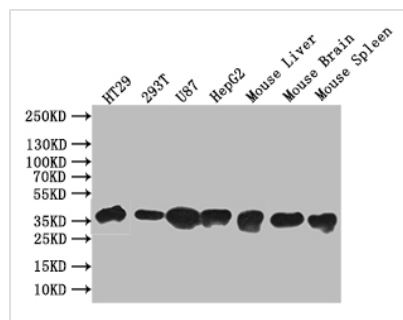




SLC10A2 Antibody

Product Code	CSB-PA843819
Storage	Upon receipt, store at -20°C or -80°C. Avoid repeated freeze.
Uniprot No.	Q12908
Immunogen	Synthesized peptide derived from human SLC10A2
Raised In	Rabbit
Species Reactivity	Human, Mouse
Tested Applications	ELISA, WB; Recommended dilution: WB:1:500-1:2000
Form	Liquid
Conjugate	Non-conjugated
Storage Buffer	Liquid in PBS containing 50% glycerol, 0.5% BSA and 0.02% sodium azide.
Purification Method	The antibody was affinity-purified from rabbit antiserum by affinity-chromatography using epitope-specific immunogen.
Isotype	IgG
Clonality	Polyclonal
Product Type	Polyclonal Antibody
Immunogen Species	Homo sapiens (Human)
Research Area	Signal Transduction
Target Names	SLC10A2

Image



Western Blot

Positive WB detected in: HT29 whole cell lysate, 293T whole cell lysate, U87 whole cell lysate, HepG2 whole cell lysate, Mouse Liver tissue lysate, Mouse Brain tissue lysate, Mouse Spleen tissue lysate

All lanes: SLC10A2 antibody at 1:1000

Secondary

Goat polyclonal to rabbit IgG at 1/50000 dilution

Predicted band size: 38 kDa

Observed band size: 38 kDa