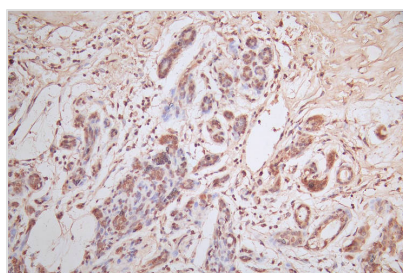




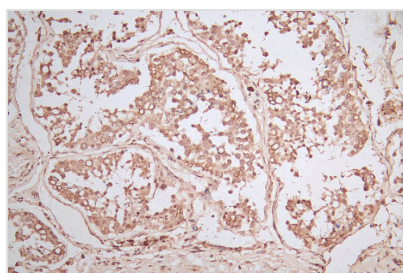
ERBB2 Recombinant Monoclonal Antibody

Product Code	CSB-RA007763MA2HU
Storage	Upon receipt, store at -20°C or -80°C. Avoid repeated freeze.
Uniprot No.	P04626
Immunogen	A synthesized peptide derived from Human ERBB2
Species Reactivity	Human
Tested Applications	ELISA, IHC; Recommended dilution: IHC:1:50-1:200
Form	Liquid
Conjugate	Non-conjugated
Storage Buffer	Preservative: 0.03% Proclin 300 Constituents: 50% Glycerol, 0.01M PBS, PH 7.4
Purification Method	Affinity-chromatography
Isotype	Mouse IgG
Clonality	Monoclonal
Product Type	Recombinant Antibody
Immunogen Species	Homo sapiens (Human)
Research Area	Cancer;Tags & Cell Markers?Immunology;Signal transduction
Gene Names	ERBB2
Clone No.	25E7

Image



IHC image of CSB-RA007763MA2HU diluted at 1:600 and staining in paraffin-embedded human breast cancer performed on a Leica Bond™ system. After dewaxing and hydration, antigen retrieval was mediated by high pressure in a citrate buffer (pH 6.0). Section was blocked with 10% normal goat serum 30min at RT. Then primary antibody (1% BSA) was incubated at 4°C overnight. The primary is detected by a Goat anti-Mouse IgG labeled by HRP and visualized using 0.05% DAB.



IHC image of CSB-RA007763MA2HU diluted at 1:600 and staining in paraffin-embedded human testis tissue performed on a Leica Bond™ system. After dewaxing and hydration, antigen retrieval was mediated by high pressure in a citrate buffer (pH 6.0). Section was blocked with 10% normal goat serum 30min at RT. Then primary antibody (1% BSA) was incubated at



4°C overnight. The primary is detected by a Goat
Goat anti-
Mouse IgG labeled by HRP and visualized using
0.05% DAB.

Description

The recombinant monoclonal antibody targeting ERBB2 is produced through a series of steps. Initially, ERBB2 antibody genes are integrated into plasmid vectors. These modified plasmid vectors are then introduced into suitable host cells for expression using exogenous protein expression techniques. Subsequently, the ERBB2 recombinant monoclonal antibody is purified using affinity chromatography. Comprehensive validation of this antibody has been conducted for specific applications, including ELISA and IHC. It's important to emphasize that this antibody exclusively recognizes the human ERBB2 protein.

The main function of ERBB2 (HER2) is to regulate cell signaling pathways that control cell growth, proliferation, differentiation, and survival. Dysregulation of ERBB2 signaling is associated with cancer development and progression.