

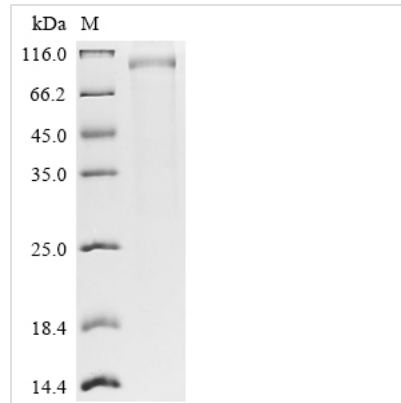


Recombinant Human Leucine-rich repeat-containing G-protein coupled receptor 5 (LGR5), partial

Product Code	CSB-MP012906HU1
Abbreviation	Recombinant Human LGR5 protein, partial
Storage	The shelf life is related to many factors, storage state, buffer ingredients, storage temperature and the stability of the protein itself. Generally, the shelf life of liquid form is 6 months at -20°C/-80°C. The shelf life of lyophilized form is 12 months at -20°C/-80°C.
Uniprot No.	O75473
Form	Liquid or Lyophilized powder
Storage Buffer	If the delivery form is liquid, the default storage buffer is Tris/PBS-based buffer, 5%-50% glycerol. If the delivery form is lyophilized powder, the buffer before lyophilization is Tris/PBS-based buffer, 6% Trehalose.
Product Type	Recombinant Human Leucine-rich repeat-containing G-protein coupled receptor 5(LGR5),partial
Immunogen Species	Homo sapiens (Human)
Sensitivity	Not Test
Purity	Greater than 85% as determined by SDS-PAGE.
Sequence	GSSPRSGVLLRGCPHCHCEPDGRMLLRVDCSDLGLSELPSNLSVFTSYLDL SMNNISQLLPNPLPSLRFLEELRLAGNALTYPKGAFTGLYSLKVLMLQNNQLR HVPTEALQNLRSLSRLDANHISYVPPSCFSGLHSLRHLWLDDNALTEIPVQA FRSLSALQAMTLALNKIHHIPDYAFGNLSSLVVLHHLHNNRIHSLGKKCFDGLHSL ETLDLNYNNLDEFPTAIRTLNKLKELGFHSSNIRSIPEKAFVGNPSSLITIHFYDNP QFVGRSAFQHLPELRTLTLNGASQITEFPDLTGTANLESLLTGAQISSLPQTV CNQLPNLQVLDLSYNLLEDLPSFSVCQKLQKIDLRHNEIYEIKVDTFQQLLSLRS LNLAWNKIAIHPNAFSTLPSLIKLDLSSNLLSSFPITGLHGLTHLKLGTGNHALQSL ISSENFPELKVIEMPYAYQCCAFGVCENAYKISNQWNKGDNSSMDDLHKKDA GMFQAQDERDLEDFLLDFFEDLKALHSVQCSPSPGPFKPEHLLDGWLI
Research Area	Others
Source	Mammalian cell
Target Names	LGR5
Expression Region	22-560aa
Notes	Repeated freezing and thawing is not recommended. Store working aliquots at 4°C for up to one week.
Tag Info	C-terminal hFc1-tagged
Mol. Weight	89.1 kDa

**Protein Length**

Partial

Image

(Tris-Glycine gel) Discontinuous SDS-PAGE (reduced) with 5% enrichment gel and 15% separation gel.

Reconstitution

We recommend that this vial be briefly centrifuged prior to opening to bring the contents to the bottom. Please reconstitute protein in deionized sterile water to a concentration of 0.1-1.0 mg/mL. We recommend to add 5-50% of glycerol (final concentration) and aliquot for long-term storage at -20°C/-80°C. Our default final concentration of glycerol is 50%. Customers could use it as reference.

Shelf Life

The shelf life is related to many factors, storage state, buffer ingredients, storage temperature and the stability of the protein itself. Generally, the shelf life of liquid form is 6 months at -20°C/-80°C. The shelf life of lyophilized form is 12 months at -20°C/-80°C.