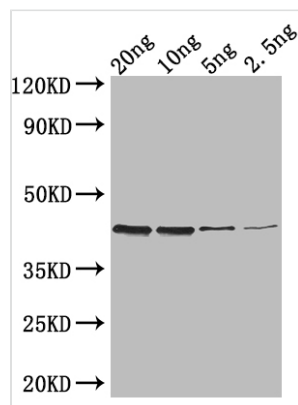




# ZIP1 Antibody

<b>Product Code</b>	CSB-PA339148XA11SVG
<b>Storage</b>	Upon receipt, store at -20°C or -80°C. Avoid repeated freeze.
<b>Uniprot No.</b>	P31111
<b>Immunogen</b>	Recombinant <i>S. cerevisiae</i> ZIP1 protein (603-875aa)
<b>Species Reactivity</b>	<i>S. cerevisiae</i>
<b>Tested Applications</b>	ELISA, WB
<b>Form</b>	Liquid
<b>Conjugate</b>	Non-conjugated
<b>Storage Buffer</b>	Preservative: 0.03% Proclin 300 Constituents: 50% Glycerol, 0.01M PBS, pH 7.4
<b>Purification Method</b>	Affinity-chromatography
<b>Isotype</b>	IgG
<b>Clonality</b>	Polyclonal
<b>Product Type</b>	Polyclonal Antibody
<b>Immunogen Species</b>	<i>Saccharomyces cerevisiae</i> (strain ATCC 204508 / S288c) (Baker's yeast)
<b>Target Names</b>	ZIP1

## Image



### Western Blot

Positive WB detected in: recombinant protein

All lanes: ZIP1 Antibody at 1:1000

Secondary

Goat polyclonal to rabbit IgG at 1/50000 dilution

Predicted band size: 40 kDa

Observed band size: 40 kDa

## Usage

For Research Use Only. Not for use in diagnostic or therapeutic procedures.