

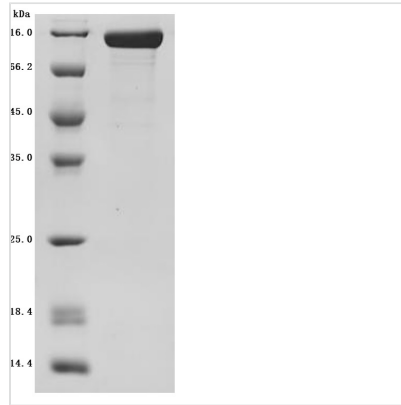


Recombinant *Macaca fascicularis* CUB domain containing protein 1 (CDCP1), partial (Active)

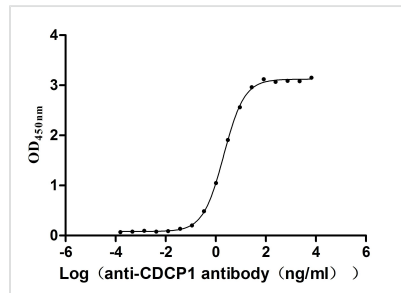
Product Code	CSB-MP4569MOV
Abbreviation	Recombinant <i>Cynomolgus</i> monkey CDCP1 protein, partial (Active)
Storage	The shelf life is related to many factors, storage state, buffer ingredients, storage temperature and the stability of the protein itself. Generally, the shelf life of liquid form is 6 months at -20°C/-80°C. The shelf life of lyophilized form is 12 months at -20°C/-80°C.
Uniprot No.	A0A2K5VLA8
Form	Lyophilized powder
Storage Buffer	Lyophilized from a 0.2 µm filtered 20 mM Tris-HCl, 0.5 M NaCl, 6% Trehalose, pH 8.0
Product Type	Recombinant Protein
Immunogen Species	<i>Macaca fascicularis</i> (Crab-eating macaque) (<i>Cynomolgus</i> monkey)
Biological Activity	Measured by its binding ability in a functional ELISA. Immobilized <i>Macaca fascicularis</i> CDCP1 at 2 µg/mL can bind Anti-CDCP1 recombinant antibody (CSB-RA884474MA1HU), the EC50 is 1.861-2.330 ng/mL.
Purity	Greater than 95% as determined by SDS-PAGE.
Sequence	FEIALPRESNITVLIKLGTPDLLAKPCYIVISKRHTTMLSIPGERILFTFSCQSPE NHFVIEIQKNIDCMMSGPCPFGEVQLQPSTSLPLNRTFIWDVKAHKSIGLELQF SIPRLRQFGPGESCPDGVVTYSISGRIDATVVRIGTFCSNGTVSRIKMQEGVKMA LHLPWFHPRNVSGFSIANRSSIKRLCIIESVFEGEGSATLMSANYPEGFPEDEL MTWQFVIPAHLRASVSFLNFNLSNCERKEERVEYYIPGSTTNPEVFKLEDKQP GNMAGNFNLSLQGCDDAQNPQILRLQFQVLVQHPQNESNKIYVVDLSNERA TSLTIEPRPVKQSRKFVPGCFVCLESRTCSTNLTLTSGSKHKISFLCDNLTRLW MNVEKNISCTDHYCQRKSYSLQVPSDIFHLPVELHDFSWKLLVPKDRLSLVL VPAQLLQQHTHEKPCNTSFSYLVASAIQSQDLYFGSFCPGGSIEQIQVKQNISV TLRTFAPSFRQEASRQGLTVSFIPYFKEEGVFTVTPDTKSKVYL RTPNWDRGL PSLTSVSWNISVPRDQVACLTFKERTGVVCQTGRAFMIIQEQRTRAEEIFSLD EDALPKPRFHHSFWVNISNCSPASGKQLDLLFWVTLTPRTVDLT
Source	Mammalian cell
Target Names	CDCP1
Expression Region	30-667aa
Notes	Repeated freezing and thawing is not recommended. Store working aliquots at 4°C for up to one week.
Tag Info	C-terminal 10xHis-tagged
Mol. Weight	73.5 kDa
Protein Length	Partial



Image



(Tris-Glycine gel) Discontinuous SDS-PAGE (reduced) with 5% enrichment gel and 15% separation gel.



Activity

Measured by its binding ability in a functional ELISA. Immobilized *Macaca fascicularis* CDCP1 at 2 μ g/mL can bind Anti-CDCP1 recombinant antibody (CSB-RA884474MA1HU)?the EC₅₀ is 1.861-2.330 ng/mL.

Endotoxin

Less than 1.0 EU/ μ g as determined by LAL method.

Reconstitution

We recommend that this vial be briefly centrifuged prior to opening to bring the contents to the bottom. Please reconstitute protein in deionized sterile water to a concentration of 0.1-1.0 mg/mL. We recommend to add 5-50% of glycerol (final concentration) and aliquot for long-term storage at -20°C/-80°C. Our default final concentration of glycerol is 50%. Customers could use it as reference.

Shelf Life

The shelf life is related to many factors, storage state, buffer ingredients, storage temperature and the stability of the protein itself.

Generally, the shelf life of liquid form is 6 months at -20°C/-80°C. The shelf life of lyophilized form is 12 months at -20°C/-80°C.