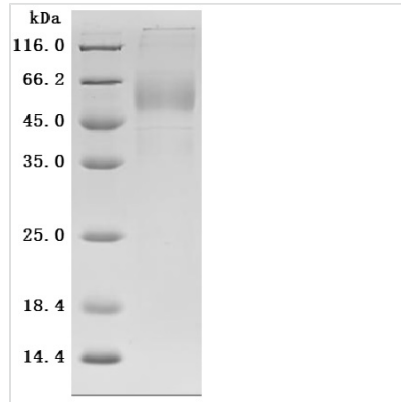


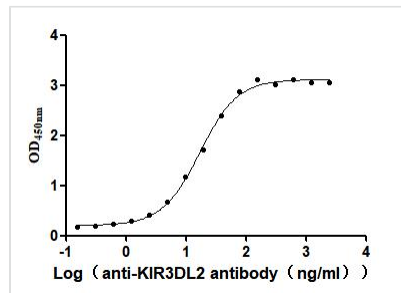


Recombinant Human Killer cell immunoglobulin-like receptor 3DL2 (KIR3DL2), partial (Active)

Product Code	CSB-MP012365HU1
Abbreviation	Recombinant Human KIR3DL2 protein, partial (Active)
Storage	The shelf life is related to many factors, storage state, buffer ingredients, storage temperature and the stability of the protein itself. Generally, the shelf life of liquid form is 6 months at -20°C/-80°C. The shelf life of lyophilized form is 12 months at -20°C/-80°C.
Uniprot No.	P43630
Form	Lyophilized powder
Storage Buffer	Lyophilized from a 0.2 µm filtered 20 mM Tris-HCl, 0.5 M NaCl, 6% Trehalose, pH 8.0
Product Type	Recombinant Protein
Immunogen Species	Homo sapiens (Human)
Biological Activity	Measured by its binding ability in a functional ELISA. Immobilized Human KIR3DL2 at 2 µg/mL can bind Anti-KIR3DL2 recombinant antibody (CSB-RA012365MA1HU), the EC50 is 14.18-23.93 ng/mL.
Purity	≥ 95% as determined by SDS-PAGE. ≥ 95% as determined by SEC-HPLC.
Sequence	LMGGQDKPFLSARPSTVVPRGGHVALQCHYRRGFNNFMLYKEDRSHVPIFHG RIFQESFIMGPVTPAHAGTYRCRGSRPHSLTGWSAPSNPLVIMVTGNHRKPSL LAHPGPLLKSGETVILQCWSDVMFEHFFLHREGISEDPSRLVGQIHDGVS KANFSIGPLMPVLAGTYRCYGSVPHPYQLSAPSDPLDIVITGLYEKPSLSAQPGPT VQAGENVTLSCSSWSSYDIYHLSREGEAHERRLRAVPKVNRTFQADFPLGPA THGGTYRCFGSFRALPCVWSNSSDPLLVSVTGNPSSSWPSPTEPSSKSGICR HLH
Source	Mammalian cell
Target Names	KIR3DL2
Expression Region	22-340aa
Notes	Repeated freezing and thawing is not recommended. Store working aliquots at 4°C for up to one week.
Tag Info	C-terminal 10xHis-tagged
Mol. Weight	36.4KDa
Protein Length	Partial
Image	

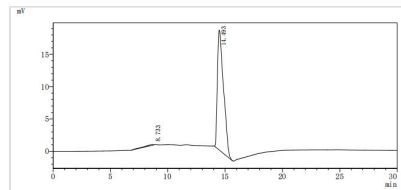


(Tris-Glycine gel) Discontinuous SDS-PAGE (reduced) with 5% enrichment gel and 15% separation gel.



Activity

Measured by its binding ability in a functional ELISA. Immobilized Human KIR3DL2 at 2 μ g/mL can bind Anti-KIR3DL2 recombinant antibody (CSB-RA012365MA1HU) the EC₅₀ is 14.18-23.93 ng/mL.



The purity of KIR3DL2 was greater than 95% as determined by SEC-HPLC

Endotoxin

Less than 1.0 EU/ug as determined by LAL method.

Reconstitution

We recommend that this vial be briefly centrifuged prior to opening to bring the contents to the bottom. Please reconstitute protein in deionized sterile water to a concentration of 0.1-1.0 mg/mL. We recommend to add 5-50% of glycerol (final concentration) and aliquot for long-term storage at -20°C/-80°C. Our default final concentration of glycerol is 50%. Customers could use it as reference.

Shelf Life

The shelf life is related to many factors, storage state, buffer ingredients, storage temperature and the stability of the protein itself.

Generally, the shelf life of liquid form is 6 months at -20°C/-80°C. The shelf life of lyophilized form is 12 months at -20°C/-80°C.