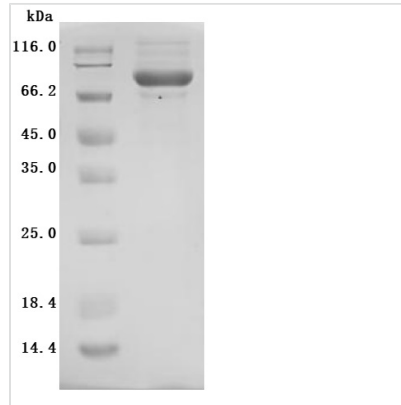


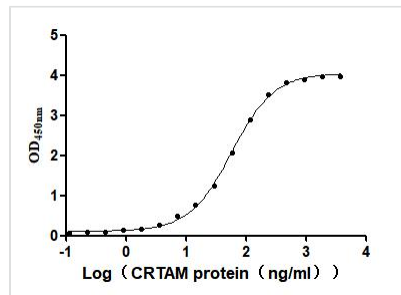


Recombinant Mouse Cytotoxic and regulatory T-cell molecule (Crtam), partial (Active)

Product Code	CSB-MP614820MO
Abbreviation	Recombinant Mouse Crtam protein, partial (Active)
Storage	The shelf life is related to many factors, storage state, buffer ingredients, storage temperature and the stability of the protein itself. Generally, the shelf life of liquid form is 6 months at -20°C/-80°C. The shelf life of lyophilized form is 12 months at -20°C/-80°C.
Uniprot No.	Q149L7
Form	Lyophilized powder
Storage Buffer	Lyophilized from a 0.2 µm sterile filtered PBS, 6% Trehalose, pH 7.4
Alias	Class-I MHC-restricted T-cell-associated molecule;CD355
Product Type	Recombinant Protein
Immunogen Species	Mus musculus (Mouse)
Biological Activity	Measured by its binding ability in a functional ELISA. Immobilized Mouse Cadm1(CSB-MP004425MO) at 2 µg/mL can bind Mouse Crtam, the EC50 is 54.36 -61.77 ng/mL.
Purity	≥ 90% as determined by SDS-PAGE.
Sequence	AFLKMETVTVEEGQTLTLTCVTSQTKNVSLQWLAPSGFTIFLNQHPALKSSKY QLLHHSATQLSISVSNVTLREEGVYTCLHYGSSVKTKQVRVTVLVTPFQPTVEA LVLRRQNGEKSVVLKCTERSKPPPQITWLLGEGLEIYGELNHEFEADGKICNT SSMLIARAYGKNSTVHCIIQHEGLHGRKLVAPFQFEDLVADQETSQETSQDAP EQSSLSSQALQQPTSTVSMSENSIPETDKEEKEHATQDPGLSTEASQAHTG LARRKSG
Source	Mammalian cell
Target Names	Crtam
Expression Region	17-289aa
Notes	Repeated freezing and thawing is not recommended. Store working aliquots at 4°C for up to one week.
Tag Info	C-terminal hFc1-tagged
Mol. Weight	58.9KDa
Protein Length	Partial
Image	



(Tris-Glycine gel) Discontinuous SDS-PAGE (reduced) with 5% enrichment gel and 15% separation gel.



Activity
 Measured by its binding ability in a functional ELISA. Immobilized Mouse Cadm1(CSB-MP004425MO) at 2 μ g/mL can bind Mouse Crtam?the EC₅₀ is 54.36 -61.77 ng/mL.

Endotoxin

Less than 1.0 EU/ug as determined by LAL method.

Reconstitution

We recommend that this vial be briefly centrifuged prior to opening to bring the contents to the bottom. Please reconstitute protein in deionized sterile water to a concentration of 0.1-1.0 mg/mL. We recommend to add 5-50% of glycerol (final concentration) and aliquot for long-term storage at -20°C/-80°C. Our default final concentration of glycerol is 50%. Customers could use it as reference.

Shelf Life

The shelf life is related to many factors, storage state, buffer ingredients, storage temperature and the stability of the protein itself.

Generally, the shelf life of liquid form is 6 months at -20°C/-80°C. The shelf life of lyophilized form is 12 months at -20°C/-80°C.