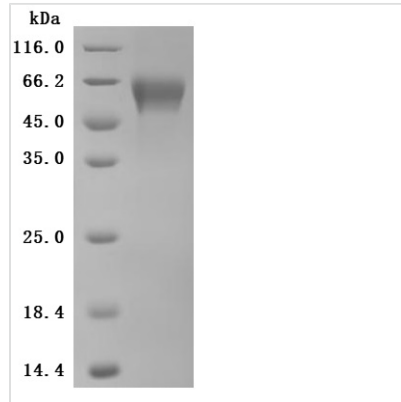


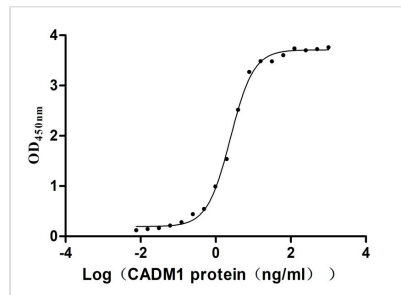


# Recombinant Human Cytotoxic and regulatory T-cell molecule (CRTAM), partial (Active)

<b>Product Code</b>	CSB-MP005998HU1d7
<b>Abbreviation</b>	Recombinant Human CRTAM protein, partial (Active)
<b>Storage</b>	The shelf life is related to many factors, storage state, buffer ingredients, storage temperature and the stability of the protein itself. Generally, the shelf life of liquid form is 6 months at -20°C/-80°C. The shelf life of lyophilized form is 12 months at -20°C/-80°C.
<b>Uniprot No.</b>	O95727
<b>Form</b>	Lyophilized powder
<b>Storage Buffer</b>	Lyophilized from a 0.2 μm filtered 20 mM Tris-HCl, 0.5 M NaCl, 6% Trehalose, pH 8.0
<b>Alias</b>	Class-I MHC-restricted T-cell-associated molecule;CD355
<b>Product Type</b>	Recombinant Protein
<b>Immunogen Species</b>	Homo sapiens (Human)
<b>Biological Activity</b>	Measured by its binding ability in a functional ELISA. Immobilized Human CRTAM at 2 μg/mL can bind Human CADM1(CSB-MP004425HUd9) , the EC50 is 2.277-2.649 ng/mL.
<b>Purity</b>	≥ 95% as determined by SDS-PAGE.
<b>Sequence</b>	SLTNHTETITVEEGQTLTLKCVTSLRKNSSLQWLTPSGFTIFLNEYPAKNSKY QLLHHSANQLSITVPNVTLQDEGVYKCLHYSVSTKEVKVIVLATPFKPILEAS VIRKQNGEEHVLMCSTMRSKPPPQITWLLGNSMEVSGGTLHEFETDGKKCN TTSTLIIHTYGKNSTVDCIIRHRGLQGRKLVAPFRFEDLVTDDEETASDALERNL SSQDPQQPTSTVSVTEDSSTSEIDKEEKEQTTQDPDLTTEANPQYLGLARKKS G
<b>Source</b>	Mammalian cell
<b>Target Names</b>	CRTAM
<b>Expression Region</b>	18-287aa
<b>Notes</b>	Repeated freezing and thawing is not recommended. Store working aliquots at 4°C for up to one week.
<b>Tag Info</b>	C-terminal 10xHis-tagged
<b>Mol. Weight</b>	31.4KDa
<b>Protein Length</b>	Partial
<b>Image</b>	



(Tris-Glycine gel) Discontinuous SDS-PAGE (reduced) with 5% enrichment gel and 15% separation gel.



**Activity**  
 Measured by its binding ability in a functional ELISA. Immobilized Human CRTAM at 2 $\mu$ g/mL can bind Human CADM1(CSB-MP004425HUd9) the EC<sub>50</sub> is 2.277-2.649 ng/mL.

### Endotoxin

Less than 1.0 EU/ $\mu$ g as determined by LAL method.

### Reconstitution

We recommend that this vial be briefly centrifuged prior to opening to bring the contents to the bottom. Please reconstitute protein in deionized sterile water to a concentration of 0.1-1.0 mg/mL. We recommend to add 5-50% of glycerol (final concentration) and aliquot for long-term storage at -20°C/-80°C. Our default final concentration of glycerol is 50%. Customers could use it as reference.

### Shelf Life

The shelf life is related to many factors, storage state, buffer ingredients, storage temperature and the stability of the protein itself.

Generally, the shelf life of liquid form is 6 months at -20°C/-80°C. The shelf life of lyophilized form is 12 months at -20°C/-80°C.