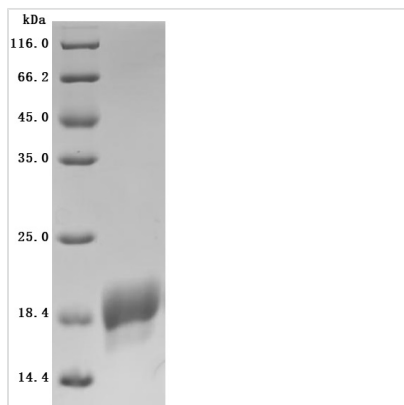


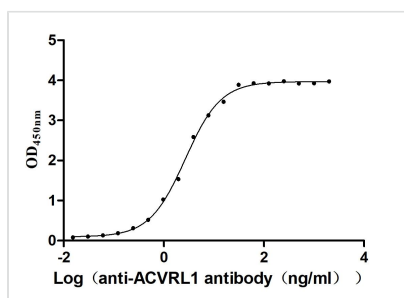


Recombinant Human Serine/threonine-protein kinase receptor R3 (ACVRL1), partial (Active)

Product Code	CSB-BP001262HU1
Abbreviation	Recombinant Human ACVRL1 protein, partial (Active)
Storage	The shelf life is related to many factors, storage state, buffer ingredients, storage temperature and the stability of the protein itself. Generally, the shelf life of liquid form is 6 months at -20°C/-80°C. The shelf life of lyophilized form is 12 months at -20°C/-80°C.
Uniprot No.	P37023
Form	Lyophilized powder
Storage Buffer	Lyophilized from a 0.2 µm filtered 20 mM Tris-HCl, 0.5 M NaCl, 6% Trehalose, pH 8.0
Product Type	Recombinant Protein
Immunogen Species	Homo sapiens (Human)
Biological Activity	Measured by its binding ability in a functional ELISA. Immobilized Human ACVRL1 at 2 µg/mL can bind Anti-ACVRL1 recombinant antibody(CSB-RA001262MA1HU), the EC50 is 2.417-2.971 ng/mL.
Purity	Greater than 95% as determined by SDS-PAGE.
Sequence	DPVKPSRGPLVTCTCESPHCKGPTCRGAWCTVVLVREEGRHPQEHRGCGNL HRELCRGRPTEFVNHYCCDSHLCNHNVSLVLEATQPPSEQPGTDGQ
Source	Baculovirus
Target Names	ACVRL1
Expression Region	22-118aa
Notes	Repeated freezing and thawing is not recommended. Store working aliquots at 4°C for up to one week.
Tag Info	C-terminal 6xHis-tagged
Mol. Weight	11.5KDa
Protein Length	Partial
Image	



(Tris-Glycine gel) Discontinuous SDS-PAGE (reduced) with 5% enrichment gel and 15% separation gel.



Activity
 Measured by its binding ability in a functional ELISA. Immobilized Human ACVRL1 at 2µg/mL can bind Anti-ACVRL1 recombinant antibody(CSB-RA001262MA1HU)?the EC₅₀ is 2.417-2.971 ng/mL.

Endotoxin	Less than 1.0 EU/ug as determined by LAL method.
Reconstitution	We recommend that this vial be briefly centrifuged prior to opening to bring the contents to the bottom. Please reconstitute protein in deionized sterile water to a concentration of 0.1-1.0 mg/mL. We recommend to add 5-50% of glycerol (final concentration) and aliquot for long-term storage at -20°C/-80°C. Our default final concentration of glycerol is 50%. Customers could use it as reference.
Shelf Life	The shelf life is related to many factors, storage state, buffer ingredients, storage temperature and the stability of the protein itself. Generally, the shelf life of liquid form is 6 months at -20°C/-80°C. The shelf life of lyophilized form is 12 months at -20°C/-80°C.