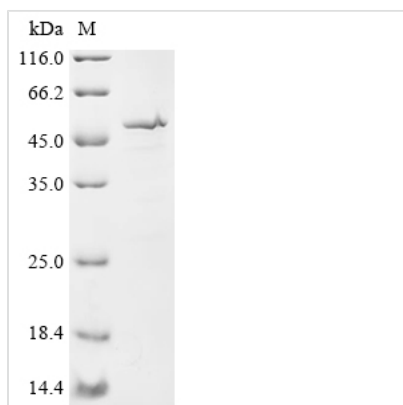




Recombinant Human Cytochrome P450 2A6 (CYP2A6), partial

Product Code	CSB-EP006410HUe1
Abbreviation	Recombinant Human CYP2A6 protein, partial
Storage	The shelf life is related to many factors, storage state, buffer ingredients, storage temperature and the stability of the protein itself. Generally, the shelf life of liquid form is 6 months at -20°C/-80°C. The shelf life of lyophilized form is 12 months at -20°C/-80°C.
Uniprot No.	P11509
Form	Liquid or Lyophilized powder
Storage Buffer	If the delivery form is liquid, the default storage buffer is Tris/PBS-based buffer, 5%-50% glycerol. If the delivery form is lyophilized powder, the buffer before lyophilization is Tris/PBS-based buffer, 6% Trehalose.
Product Type	Recombinant Human Cytochrome P450 2A6(CYP2A6),partial
Immunogen Species	Homo sapiens (Human)
Sensitivity	Not Test
Purity	≥ 85% as determined by SDS-PAGE.
Sequence	SKGKLPPGPTPLPFIGNYLQLNTEQMYNSLMKISERYGPVFTIHLGPRRVVLC GHDAVREALVDQAEFSGRGEQATFDWVFKGYGVVFSNGERAKQLRRFSIAT LRDFGVGKRGIEERIQQEEAGFLIDALRGTGGANIDPTFFLSRTVSNVISSIVFGD RFDYKDKKEFLSLLRMMLGIFQFTSTSTGQLYEMFSSVMKHLPGPQQQAFQLL QGLEDFAKKVEHNQRTLDPNSPRDFIDSFLIRMQEEEEKNPNTEFYLNLMVMTT LNLFIGGTETVSTTLRYGFLLLMKHPEVEAKVHEEIDRVIGKNRQPKFEDRAKM PYMEAVIHEIQRFQGDVIPMSLARRVKKDTKFRDFFLPKGTEVFPMLGSLVRDPS FFSNPQDFNPQHFLNEKGQFKKSDAFVFPFSIGKRNCFGEGGLARMELFLFFTTV MQNFRLKSSQSPKDIDVSPKHVGFATIPRNYTMSFLPR
Research Area	Cardiovascular
Source	E.coli
Target Names	CYP2A6
Expression Region	29-494aa
Notes	Repeated freezing and thawing is not recommended. Store working aliquots at 4°C for up to one week.
Tag Info	Tag-Free
Mol. Weight	53.5 kDa
Protein Length	Partial
Image	



(Tris-Glycine gel) Discontinuous SDS-PAGE (reduced) with 5% enrichment gel and 15% separation gel.

Reconstitution

We recommend that this vial be briefly centrifuged prior to opening to bring the contents to the bottom. Please reconstitute protein in deionized sterile water to a concentration of 0.1-1.0 mg/mL. We recommend to add 5-50% of glycerol (final concentration) and aliquot for long-term storage at -20°C/-80°C. Our default final concentration of glycerol is 50%. Customers could use it as reference.

Shelf Life

The shelf life is related to many factors, storage state, buffer ingredients, storage temperature and the stability of the protein itself. Generally, the shelf life of liquid form is 6 months at -20°C/-80°C. The shelf life of lyophilized form is 12 months at -20°C/-80°C.