



Recombinant *Klebsiella pneumoniae* subsp. *pneumoniae* Chaperonin GroEL (groEL), Biotinylated

Product Code	CSB-EP413350KAX-B
Abbreviation	Recombinant <i>Klebsiella pneumoniae</i> subsp. <i>pneumoniae</i> groEL protein, Biotinylated
Storage	The shelf life is related to many factors, storage state, buffer ingredients, storage temperature and the stability of the protein itself. Generally, the shelf life of liquid form is 6 months at -20°C/-80°C. The shelf life of lyophilized form is 12 months at -20°C/-80°C.
Uniprot No.	A6TH53
Form	Liquid or Lyophilized powder
Storage Buffer	If the delivery form is liquid, the default storage buffer is Tris/PBS-based buffer, 5%-50% glycerol. If the delivery form is lyophilized powder, the buffer before lyophilization is Tris/PBS-based buffer, 6% Trehalose.
Product Type	Recombinant <i>Klebsiella pneumoniae</i> subsp. <i>pneumoniae</i> Chaperonin GroEL(groEL), Biotinylated
Immunogen Species	<i>Klebsiella pneumoniae</i> subsp. <i>pneumoniae</i> (strain ATCC 700721 / MGH 78578)
Sensitivity	Not Test
Purity	≥ 85% as determined by SDS-PAGE.
Sequence	<p>MAAKDVKFGNDARVKMLRGVNVLADAVKVTLGPKGRNVVLDKSFGAPTITKD GVSVAREIELEDKFENMGAQMVKEVASKANDAAGDGTATVLAQAIVNEGLK AVAAGMNPMDLKRKIDKAVLAAVEELKALSVPCSDSKAIAQVGTISANSDETV GKLIAEAMDKVGKEGVITVEDGTGLEDELDDVVEGMQFDRGYLSPYFINKPDTG AVELESPFILLADKKISNIREMLPVLEAVAKAGKPLVIAEDVEGEALATLVVNTM RGIVKVAVKAPGFGDRRKAMLQDIATLTGGTVISEEIGMELEKATLEDLGQAK RVVINKDTTTIIDGVGEESAIQGRVAQIRKQIEEATSDYDREKLQERVAKLAGGV AVIKVGAATEVEMKEKKARVDDALHATRAAVEEGVVAGGGVALVRVAAKLAGL TGQNEQNVGKVALRAMEAPLRQIVSNAGEEPSVANNVKAGDGNYGYNAA TEEYGNMIDFGILDPTKVTRRSALQYAASVAGLMITTECMVTDLPKGDAPDLGAA GGMGGMGGMGGMM</p>
Research Area	Others
Source	E.coli
Target Names	groEL
Expression Region	1-548aa
Notes	Repeated freezing and thawing is not recommended. Store working aliquots at 4°C for up to one week.

**Tag Info**

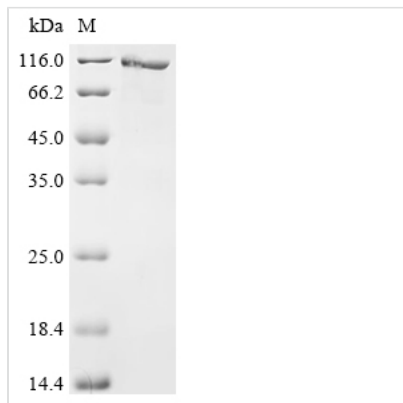
N-terminal MBP-tagged and C-terminal 6xHis-Avi-tagged

Mol. Weight

105

Protein Length

Full Length

Image

(Tris-Glycine gel) Discontinuous SDS-PAGE (reduced) with 5% enrichment gel and 15% separation gel.

Reconstitution

We recommend that this vial be briefly centrifuged prior to opening to bring the contents to the bottom. Please reconstitute protein in deionized sterile water to a concentration of 0.1-1.0 mg/mL. We recommend to add 5-50% of glycerol (final concentration) and aliquot for long-term storage at -20°C/-80°C. Our default final concentration of glycerol is 50%. Customers could use it as reference.

Shelf Life

The shelf life is related to many factors, storage state, buffer ingredients, storage temperature and the stability of the protein itself. Generally, the shelf life of liquid form is 6 months at -20°C/-80°C. The shelf life of lyophilized form is 12 months at -20°C/-80°C.