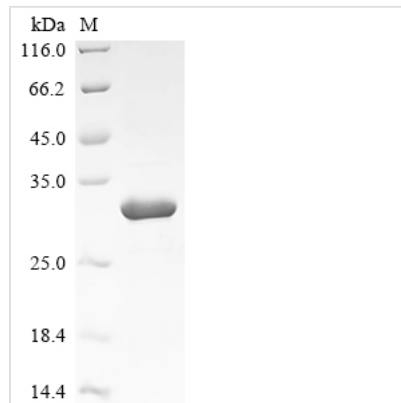




Recombinant *Saccharomyces cerevisiae* DNA-binding protein RAP1 (RAP1), partial

Product Code	CSB-EP319350SVG
Abbreviation	Recombinant <i>Saccharomyces cerevisiae</i> RAP1 protein, partial
Storage	The shelf life is related to many factors, storage state, buffer ingredients, storage temperature and the stability of the protein itself. Generally, the shelf life of liquid form is 6 months at -20°C/-80°C. The shelf life of lyophilized form is 12 months at -20°C/-80°C.
Uniprot No.	P11938
Form	Liquid or Lyophilized powder
Storage Buffer	If the delivery form is liquid, the default storage buffer is Tris/PBS-based buffer, 5%-50% glycerol. If the delivery form is lyophilized powder, the buffer before lyophilization is Tris/PBS-based buffer, 6% Trehalose.
Product Type	Recombinant <i>Saccharomyces cerevisiae</i> DNA-binding protein RAP1(RAP1),partial
Immunogen Species	<i>Saccharomyces cerevisiae</i> (strain ATCC 204508 / S288c) (Baker's yeast)
Sensitivity	Not Test
Purity	Greater than 85% as determined by SDS-PAGE.
Sequence	GALPSHNKASFTDEEDEFILDVVRKNPTRRTTHTLYDEISHYVPNHTGNSIRHR FRVYLSKRLEYVVEVDKFGKLVRRDDGNLIKTKVLPPSIKRKFSADEDYTLIAIV KKQFYRDLFQIDPDTGRSLITDEDTPTAIARRNMTMDPNHVPGSEPNFAAYRT QSRRGPIAREFFKHFAEEHAAHTENAWRDRFRKFLLAYGIDDYISYYEAEKAQ NREPEPMKNLTNRPKRPGVPTPGNYNSAAKR
Research Area	Others
Source	E.coli
Target Names	RAP1
Expression Region	353-598aa
Notes	Repeated freezing and thawing is not recommended. Store working aliquots at 4°C for up to one week.
Tag Info	Tag-Free
Mol. Weight	28.7
Protein Length	Partial

Image



(Tris-Glycine gel) Discontinuous SDS-PAGE (reduced) with 5% enrichment gel and 15% separation gel.

Reconstitution

We recommend that this vial be briefly centrifuged prior to opening to bring the contents to the bottom. Please reconstitute protein in deionized sterile water to a concentration of 0.1-1.0 mg/mL. We recommend to add 5-50% of glycerol (final concentration) and aliquot for long-term storage at -20°C/-80°C. Our default final concentration of glycerol is 50%. Customers could use it as reference.

Shelf Life

The shelf life is related to many factors, storage state, buffer ingredients, storage temperature and the stability of the protein itself. Generally, the shelf life of liquid form is 6 months at -20°C/-80°C. The shelf life of lyophilized form is 12 months at -20°C/-80°C.