

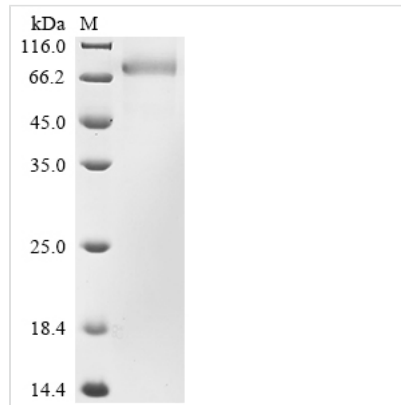


Recombinant Human Growth arrest-specific protein 6 (GAS6) (Active)

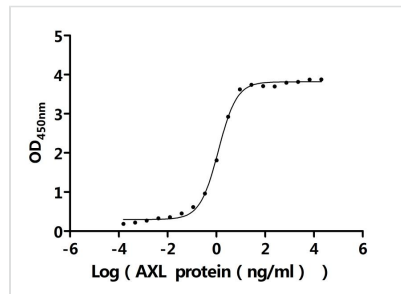
Product Code	CSB-MP619872HUd7
Abbreviation	Recombinant Human GAS6 protein (Active)
Storage	The shelf life is related to many factors, storage state, buffer ingredients, storage temperature and the stability of the protein itself. Generally, the shelf life of liquid form is 6 months at -20°C/-80°C. The shelf life of lyophilized form is 12 months at -20°C/-80°C.
Uniprot No.	Q14393
Form	Lyophilized powder
Storage Buffer	Lyophilized from a 0.2 µm sterile filtered PBS, 6% Trehalose, pH 7.4
Product Type	Recombinant Protein
Immunogen Species	Homo sapiens (Human)
Biological Activity	<p>① Measured by its binding ability in a functional ELISA. Immobilized Human GAS6 at 4 µg/mL can bind Human AXL (CSB-MP326981HUd9). The EC50 is 1.100-1.324 ng/mL.</p> <p>② Human AXL (CSB-MP326981HUd9) captured on Protein A Chip can bind Recombinant Human GAS6 with an affinity constant of 3.65 nM as detected by MetaSPR Assay (WeSPRTM 200).</p> <p>③ Measured by its binding ability in a functional ELISA. Immobilized Human GAS6 at 2 µg/mL can bind Anti-GAS6 recombinant antibody (CSB-RA619872MA1HU). The EC50 is 12.31-14.86 ng/mL.</p> <p>④ GAS6 Recombinant Monoclonal Antibody (CSB-RA619872MA1HU) captured on Protein A Chip can bind Recombinant Human GAS6 with an affinity constant of 0.767 nM as detected by MetaSPR Assay (WeSPRTM 200).</p>
Purity	Greater than 90% as determined by SDS-PAGE.
Sequence	<p>ALLPAREATQFLRPRQRRAFQVFEEAKQGHLERECVEELCSREEAREVFEND PETDYFYPRYLDCKINKYKSPYTKNSGFATCVQNLDPDQCTPNPCDRKGTQACQ DLMGNFFCLCKAGWGGRLCDKDVNECSQENGGCLQICHNKPFSFHCSCHS GFELSSDGRTCQDIDECADSEACGEARCKNLPGSYSCLCDEGFAYSSQEKAC RDVDECLQGRCEQVCVNSPGSYTCHCDGRGGLKLSQDMDTCEDILPCVPFS VAKSVKSLYLGRMFSGTPVIRLRFKRLQPTLVAEFDRTFDPEGILLFAGGHQ DSTWIVLALRAGRLELQLRYNGVGRVTSSGPVINHGMWQTISVEELARNLVIKV NRDAVMKIAVAGDLFQPERGLYHLNLTVGIPFHEKDLVQPINPRLDGCMRSW NWLNGEDTTIQETVKVNTRMQCFVTERGSFYPGSGFAFYSLDYMRTPLDVG TESTWEVEVVAHIRPAADTGVLFAWAPDLRAVPLSVALVDYHSTKLLKQLV VLAVEHTALALMEIKVCDGQEHVTVSLRDGEATLEVDGTRGQSEVSAAQLQE RLAVLERHLRSPVLTFAAGLPDVPVTSAPVTAFYRGCMTLEVNRRLLDLDEAA YKHS DITAHSCPPVEPAAA</p>
Source	Mammalian cell



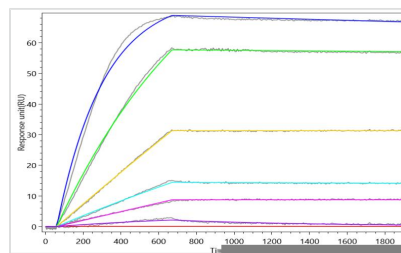
Target Names	GAS6
Expression Region	31-678aa
Notes	Repeated freezing and thawing is not recommended. Store working aliquots at 4°C for up to one week.
Tag Info	C-terminal 10xHis-tagged
Mol. Weight	78.1 kDa
Protein Length	Full Length of Mature Protein

Image


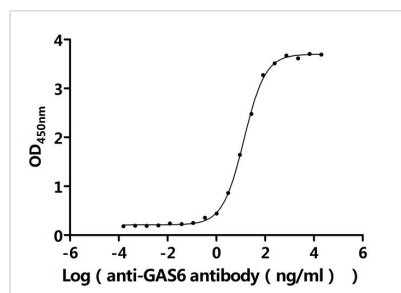
(Tris-Glycine gel) Discontinuous SDS-PAGE (reduced) with 5% enrichment gel and 15% separation gel.



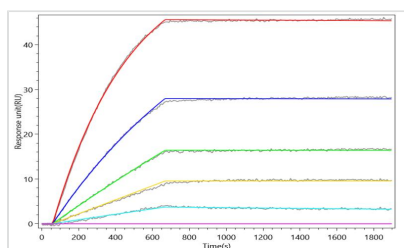
Activity
Measured by its binding ability in a functional ELISA. Immobilized Human GAS6 at 4 µg/ml can bind Human AXL (CSB-MP326981HUd9). The EC₅₀ is 1.100-1.324 ng/mL.



Activity
Human AXL (CSB-MP326981HUd9) captured on Protein A Chip can bind Recombinant Human GAS6 with an affinity constant of 3.65 nM as detected by MetaSPR Assay (WeSPRTM 200).



Activity
Measured by its binding ability in a functional ELISA. Immobilized Human GAS6 at 2 µg/ml can bind Anti-GAS6 recombinant antibody (CSB-RA619872MA1HU). The EC₅₀ is 12.31-14.86 ng/mL.



Activity
 GAS6 Recombinant Monoclonal Antibody (CSB-RA619872MA1HU) captured on Protein A Chip can bind Recombinant Human GAS6 with an affinity constant of 0.767 nM as detected by MetaSPR Assay (WeSPR™ 200).

Endotoxin

Less than 1.0 EU/ug as determined by LAL method.

Reconstitution

We recommend that this vial be briefly centrifuged prior to opening to bring the contents to the bottom. Please reconstitute protein in deionized sterile water to a concentration of 0.1-1.0 mg/mL. We recommend to add 5-50% of glycerol (final concentration) and aliquot for long-term storage at -20°C/-80°C. Our default final concentration of glycerol is 50%. Customers could use it as reference.

Shelf Life

The shelf life is related to many factors, storage state, buffer ingredients, storage temperature and the stability of the protein itself. Generally, the shelf life of liquid form is 6 months at -20°C/-80°C. The shelf life of lyophilized form is 12 months at -20°C/-80°C.