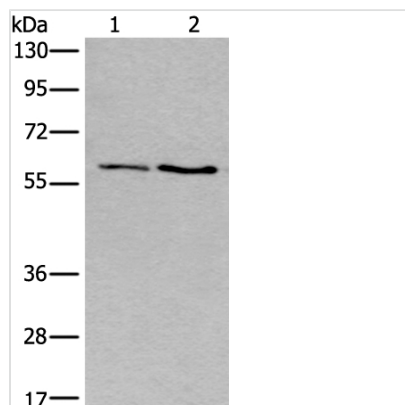




SLC17A8 Antibody

Product Code	CSB-PA107772
Storage	Upon receipt, store at -20°C or -80°C. Avoid repeated freeze.
Uniprot No.	Q8NDX2
Immunogen	Synthetic peptide of human SLC17A8
Raised In	Rabbit
Species Reactivity	Human
Tested Applications	ELISA, WB; Recommended dilution: WB:1:500-1:2000
Form	Liquid
Conjugate	Non-conjugated
Storage Buffer	Rabbit IgG in pH7.4 PBS, 0.05% NaN ₃ , 40% Glycerol.
Purification Method	The antibody was affinity-purified from rabbit antiserum by affinity-chromatography using epitope-specific immunogen.
Isotype	IgG
Clonality	Polyclonal
Product Type	Polyclonal Antibody
Immunogen Species	Homo sapiens (Human)
Target Names	SLC17A8

Image



Gel: 8%SDS-PAGE, Lysate: 40 µg, Lane 1-2: Human cerebella tissue and Human cerebrum tissue lysates, Primary antibody: CSB-PA107772(SLC17A8 Antibody) at dilution 1/250, Secondary antibody: Goat anti rabbit IgG at 1/8000 dilution, Exposure time: 10 seconds