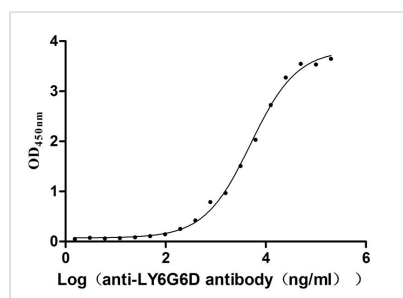




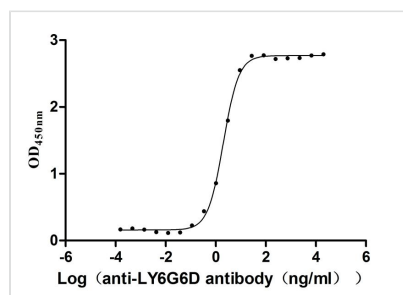
LY6G6D Recombinant Monoclonal Antibody

Product Code	CSB-RA013246MA2HU
Storage	Upon receipt, store at -20°C or -80°C. Avoid repeated freeze.
Uniprot No.	O95868
Immunogen	Recombinant Human LY6G6D protein
Species Reactivity	Human, Mouse, Rat, Macaca fascicularis
Tested Applications	ELISA, FC; Recommended dilution: FC:1:50-1:200
Form	Liquid
Conjugate	Non-conjugated
Storage Buffer	Preservative: 0.03% Proclin 300 Constituents: 50% Glycerol, 0.01M PBS, PH 7.4
Purification Method	Affinity-chromatography
Isotype	mIgG2b
Clonality	Monoclonal
Product Type	Recombinant Antibody
Immunogen Species	Homo sapiens (Human)
Gene Names	LY6G6D
Clone No.	2D6

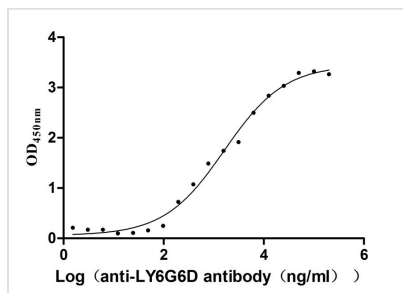
Image



The Binding Activity of Rat Ly6g6d with Anti-LY6G6D Recombinant Antibody
Activity: Measured by its binding ability in a functional ELISA. Immobilized Rat Ly6g6d (CSB-YP750592RA) at 5 µg/mL can bind Anti-LY6G6D recombinant antibody. The EC₅₀ is 4.245-5.843 µg/mL.

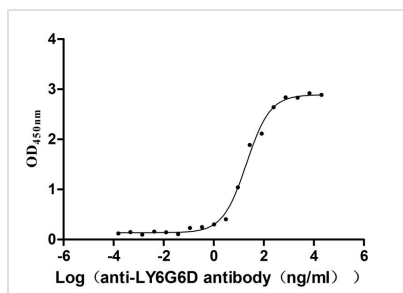


The Binding Activity of Human LY6G6D with Anti-LY6G6D Recombinant Antibody
Activity: Measured by its binding ability in a functional ELISA. Immobilized Human LY6G6D (CSB-YP013246HU) at 2 µg/mL can bind Anti-LY6G6D recombinant antibody. The EC₅₀ is 1.840-2.204 ng/mL.



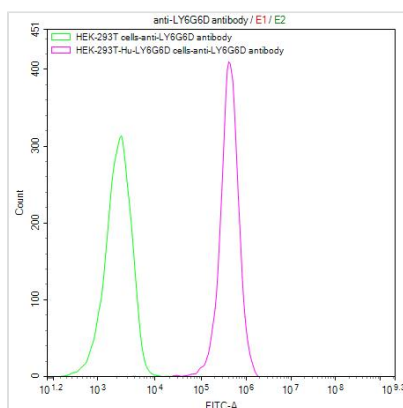
The Binding Activity of Mouse Ly6g6d with Anti-LY6G6D Recombinant Antibody

Activity: Measured by its binding ability in a functional ELISA. Immobilized Mouse Ly6g6d (CSB-YP4973MO) at 2 $\mu\text{g/mL}$ can bind Anti-LY6G6D recombinant antibody. The EC_{50} is 1.159-2.305 $\mu\text{g/mL}$.

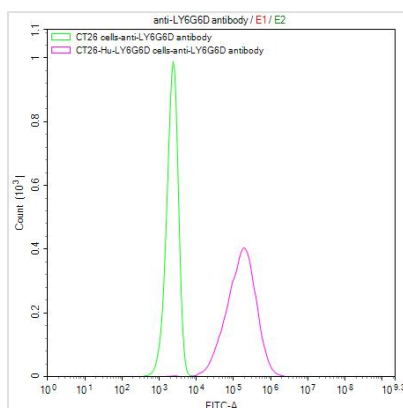


The Binding Activity of Macaca fascicularis LY6G6D with Anti-LY6G6D Recombinant Antibody

Activity: Measured by its binding ability in a functional ELISA. Immobilized Macaca fascicularis LY6G6D (CSB-YP4607MOV) at 2 $\mu\text{g/mL}$ can bind Anti-LY6G6D recombinant antibody. The EC_{50} is 16.16-25.29 ng/mL.



Untransfected HEK293T cells (green line) and transfected Human LY6G6D HEK293T stable cells (red line) were stained with anti-LY6G6D antibody (2 $\mu\text{g}/1 \times 10^6$ cells), washed and then followed by FITC-conjugated anti-Mouse IgG Fc antibody and analyzed with flow cytometry.



Untransfected CT26 cells surface (green line) and transfected Human LY6G6D CT26 stable cells surface (red line) were stained with anti-LY6G6D antibody (2 $\mu\text{g}/1 \times 10^6$ cells), washed and then followed by FITC-conjugated anti-Mouse IgG Fc antibody and analyzed with flow cytometry.