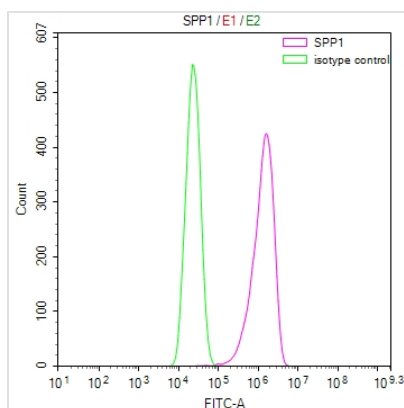




SPP1 Recombinant Monoclonal Antibody

Product Code	CSB-RA022603MA1HU
Storage	Upon receipt, store at -20°C or -80°C. Avoid repeated freeze.
Uniprot No.	P10451
Immunogen	Recombinant Human SPP1 protein
Species Reactivity	Human
Tested Applications	ELISA, FC; Recommended dilution: FC:1:20-1:500
Form	Liquid
Conjugate	Non-conjugated
Storage Buffer	Preservative: 0.03% Proclin 300 Constituents: 50% Glycerol, 0.01M PBS, PH 7.4
Purification Method	Affinity-chromatography
Isotype	Mouse IgG
Clonality	Monoclonal
Product Type	Recombinant Antibody
Immunogen Species	Homo sapiens (Human)
Research Area	Cancer?Cardiovascular;Signal transduction?Stem cells
Target Names	SPP1
Clone No.	16A6

Image



Overlay Peak curve showing A549 cells stained with CSB-RA022603MA1HU (red line) at 1:100. Then 10% normal goat serum was incubated to block non-specific protein-protein interactions followed by the antibody ($1\mu\text{g}/1 \times 10^6$ cells) for 45 min at 4°C. The secondary antibody used was FITC-conjugated Goat Anti-Mouse IgG(H+L) at 1/200 dilution for 35 min at 4°C. Isotype control antibody (green line) was mouse IgG1 ($1\mu\text{g}/1 \times 10^6$ cells) used under the same conditions. Acquisition of >10,000 events was performed.

Usage

For Research Use Only. Not for use in diagnostic or therapeutic procedures.