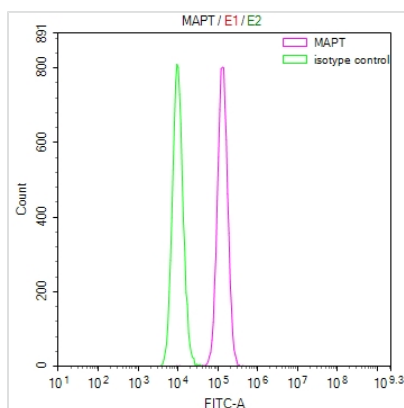




MAPT Recombinant Monoclonal Antibody

Product Code	CSB-RA013481MA1HU
Storage	Upon receipt, store at -20°C or -80°C. Avoid repeated freeze.
Uniprot No.	P10636
Immunogen	Recombinant Human MAPT protein
Species Reactivity	Human
Tested Applications	ELISA, FC; Recommended dilution: FC:1:20-1:500
Form	Liquid
Conjugate	Non-conjugated
Storage Buffer	Preservative: 0.03% Proclin 300 Constituents: 50% Glycerol, 0.01M PBS, PH 7.4
Purification Method	Affinity-chromatography
Isotype	Mouse IgG
Clonality	Monoclonal
Product Type	Recombinant Antibody
Immunogen Species	Homo sapiens (Human)
Research Area	Neuroscience;Signal transduction
Target Names	MAPT
Clone No.	1H6

Image



Overlay Peak curve showing MCF7 cells stained with CSB-RA013481MA1HU (red line) at 1:100. The cells were fixed in 4% formaldehyde (15min) and permeated by 0.2% TritonX-100 for 10min. Then 10% normal goat serum was incubated to block non-specific protein-protein interactions followed by the antibody ($1\mu\text{g}/1*10^6$ cells) for 45 min at 4°C. The secondary antibody used was FITC-conjugated Goat Anti-Mouse IgG(H+L) at 1/200 dilution for 35 min at 4°C. Isotype control antibody (green line) was mouse IgG1 ($1\mu\text{g}/1*10^6$ cells) used under the same conditions. Acquisition of >10, 000 events was performed.

Usage

For Research Use Only. Not for use in diagnostic or therapeutic procedures.