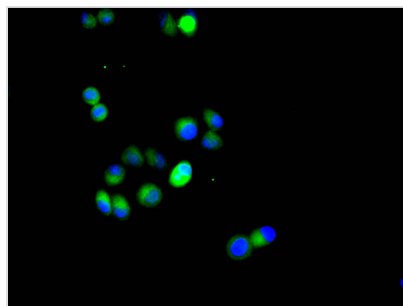




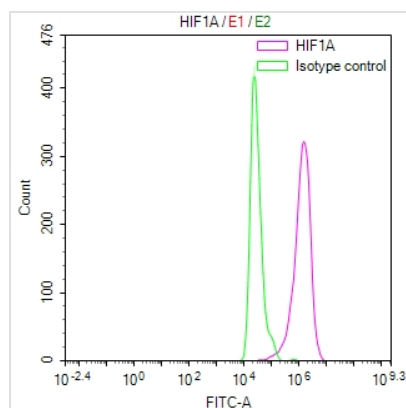
HIF1A Recombinant Monoclonal Antibody

Product Code	CSB-RA624113MA1HU
Storage	Upon receipt, store at -20°C or -80°C. Avoid repeated freeze.
Uniprot No.	Q16665
Immunogen	Recombinant Human HIF1A protein
Species Reactivity	Human
Tested Applications	ELISA, IF, FC; Recommended dilution: IF:1:20-1:200, FC:1:20-1:200
Form	Liquid
Conjugate	Non-conjugated
Storage Buffer	Preservative: 0.03% Proclin 300 Constituents: 50% Glycerol, 0.01M PBS, PH 7.4
Purification Method	Affinity-chromatography
Isotype	Rabbit IgG
Clonality	Monoclonal
Product Type	Recombinant Antibody
Immunogen Species	Homo sapiens (Human)
Research Area	Epigenetics and Nuclear Signaling;Cancer?Cardiovascular;Metabolism
Target Names	HIF1A
Clone No.	8C8

Image



Immunofluorescence staining of HeLa cell with CSB-RA624113MA1HU at 1:20, counter-stained with DAPI. The cells were fixed in 4% formaldehyde and blocked in 10% normal Goat Serum. The cells were then incubated with the antibody overnight at 4°C. The secondary antibody was FITC-conjugated AffiniPure Goat Anti-Rabbit IgG(H+L).



Overlay Peak curve showing HeLa cells stained with CSB-RA624113MA1HU (red line) at 1:50. The cells were fixed in 4% formaldehyde (15min) and permeated by 0.2% TritonX-100 for 10min. Then 10% normal goat serum to block non-specific protein-protein interactions followed by the antibody (1µg/1*10⁶ cells) for 45min at 4°C. The secondary antibody used was FITC-conjugated Goat Anti-Rabbit IgG(H+L) at 1/200 dilution for 35 min at 4°C. Isotype control antibody (green line) was rabbit IgG1 (1µg/1*10⁶ cells) used under the same conditions.



Acquisition of >10,001 events was performed.

Usage

For Research Use Only. Not for use in diagnostic or therapeutic procedures.