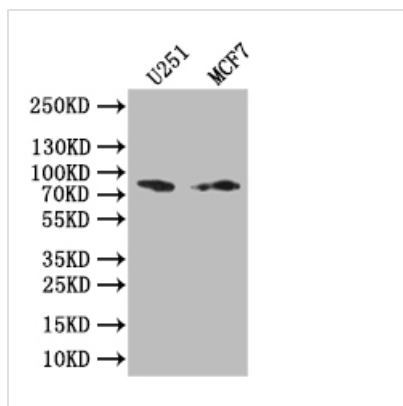




# GSN Recombinant Monoclonal Antibody

<b>Product Code</b>	CSB-RA009965MA1HU
<b>Storage</b>	Upon receipt, store at -20°C or -80°C. Avoid repeated freeze.
<b>Uniprot No.</b>	P06396
<b>Immunogen</b>	Recombinant Human GSN protein
<b>Species Reactivity</b>	Human,mouse
<b>Tested Applications</b>	ELISA, WB, IF; Recommended dilution: WB:1:1000-1:5000, IF:1:20-1:200
<b>Form</b>	Liquid
<b>Conjugate</b>	Non-conjugated
<b>Storage Buffer</b>	Preservative: 0.03% Proclin 300 Constituents: 50% Glycerol, 0.01M PBS, PH 7.4
<b>Purification Method</b>	Affinity-chromatography
<b>Isotype</b>	Rabbit IgG
<b>Clonality</b>	Monoclonal
<b>Product Type</b>	Recombinant Antibody
<b>Immunogen Species</b>	Homo sapiens (Human)
<b>Research Area</b>	Signal transduction
<b>Target Names</b>	GSN
<b>Clone No.</b>	6H4

## Image



### Western Blot

Positive WB detected in: U251 whole cell lysate, MCF7 whole cell lysate

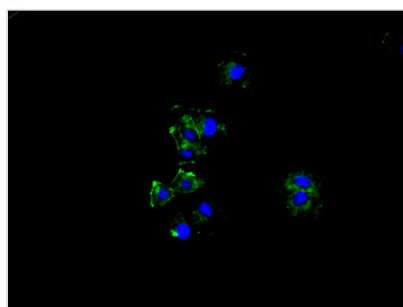
All lanes: GSN antibody at 1:1000

Secondary

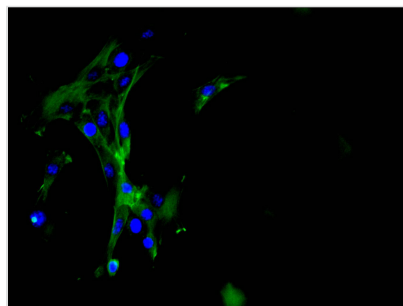
Goat polyclonal to rabbit IgG at 1/50000 dilution

Predicted band size: 85 kDa

Observed band size: 85 kDa



Immunofluorescence staining of HeLa cell with CSB-RA009965MA1HU at 1:50, counter-stained with DAPI. The cells were fixed in 4% formaldehyde and blocked in 10% normal Goat Serum. The cells were then incubated with the antibody overnight at 4°C. The secondary antibody was FITC-conjugated AffiniPure Goat Anti-Rabbit IgG(H+L).



Immunofluorescence staining of NIH/3T3 cell with CSB-RA009965MA1HU at 1:50, counter-stained with DAPI. The cells were fixed in 4% formaldehyde and blocked in 10% normal Goat Serum. The cells were then incubated with the antibody overnight at 4C. The secondary antibody was FITC-conjugated AffiniPure Goat Anti-Rabbit IgG(H+L).

## Usage

For Research Use Only. Not for use in diagnostic or therapeutic procedures.